



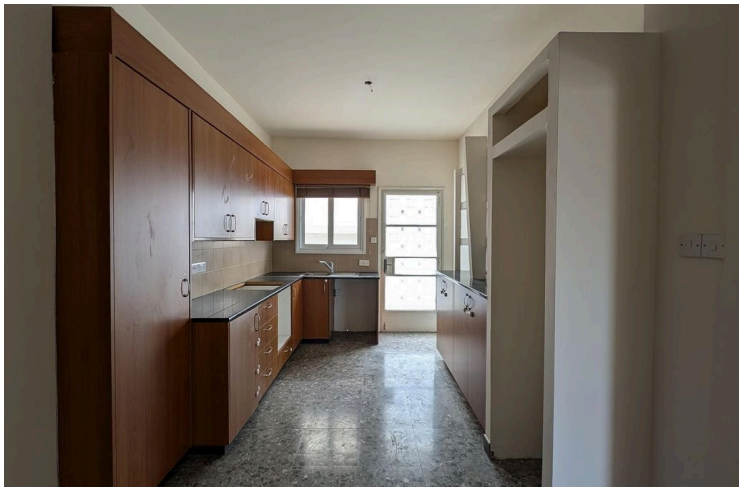
#11700

Penthouse 4 Bedroom Apartment, Apostolos Petrou & Pavlou, Limassol (11700)

📍 Petrou Kai Pavlou, Limassol

€275,000





Overview

Specifications

Bedrooms		Bathrooms		Covered		
 4		 3		 129 m ²		
Type		Apartment		Title deed		Yes
Toilets		3		Furnished		Unfurnished
Status		Resale		Structure		Concrete
Year of construction		1970		Facade		Concrete

Description

The property is a four-bedroom apartment situated on the 3rd floor of a three-storey residential building, located in Apostolos Petrou & Pavlou, Limassol. The entire building consists of one apartment/unit on each floor.

The apartment consists of a living/dining room, a kitchen, a guests' toilet, and four bedrooms, one of which is en-suite.

There is a separate title deed for this property.

The asset is located approximately 780m west of Lanitio Stadium, approximately 800m south of Spyrou Kyprianou Avenue, and approximately 480m north of the junction Nikou&Despoinas Pattichi Avenue and Archiepiskopou Makariou III.



Additional information

Facilities

Aircondition, Split system

Elevator

Parking, Covered

Solar water heater

Storage

Features

Bright

Double glazing

Easy access to main roads

Investment opportunity

Near amenities

Quiet area

Rental potential

Distances

Amenities



400 m

Airport



49 km

Sea



2 km

Schools




850 m

Contact us



Stefania Spyridou

 (+357) 99810880

 stephaniaSpyridou@gmail.com

