



#11555

Apartment in Charming Historical Center in Limassol (11555)

📍 Historical Center, Limassol





€478,000





Overview

Specifications

Bedrooms		Bathrooms		Covered	
 1		 1		 47 m ²	
Type	Apartment				
Toilets	1				
Status	Under construction				
Year of construction	2026				
Furnished	Optional furnished				
Structure	Concrete				
Facade	Concrete				
Communal charge frequency	Monthly				
Energy efficiency rating	 A+				

Description

For sale: a charming ground-floor apartment currently under construction, offering a unique opportunity to own a modern home in the heart of the Historical Center. With an internal space of 47 square meters, this apartment is designed for comfortable living, combining contemporary style with the charm of its historic surroundings.

The Historical Center is renowned for its rich heritage, featuring beautifully preserved architecture, vibrant plazas, and a variety of local shops and cafes. Residents can enjoy leisurely strolls among cobblestone streets or partake in cultural events throughout the year. The area is lively yet maintains a friendly neighborhood feel, making it an ideal location for anyone seeking a blend of modern convenience and historical allure.

Guarantee rental income 1250 euro/monthly

This apartment offers a perfect canvas for customization to fit your personal style. With its prime location, you will have easy access to local amenities, picturesque parks, and stunning landmarks.

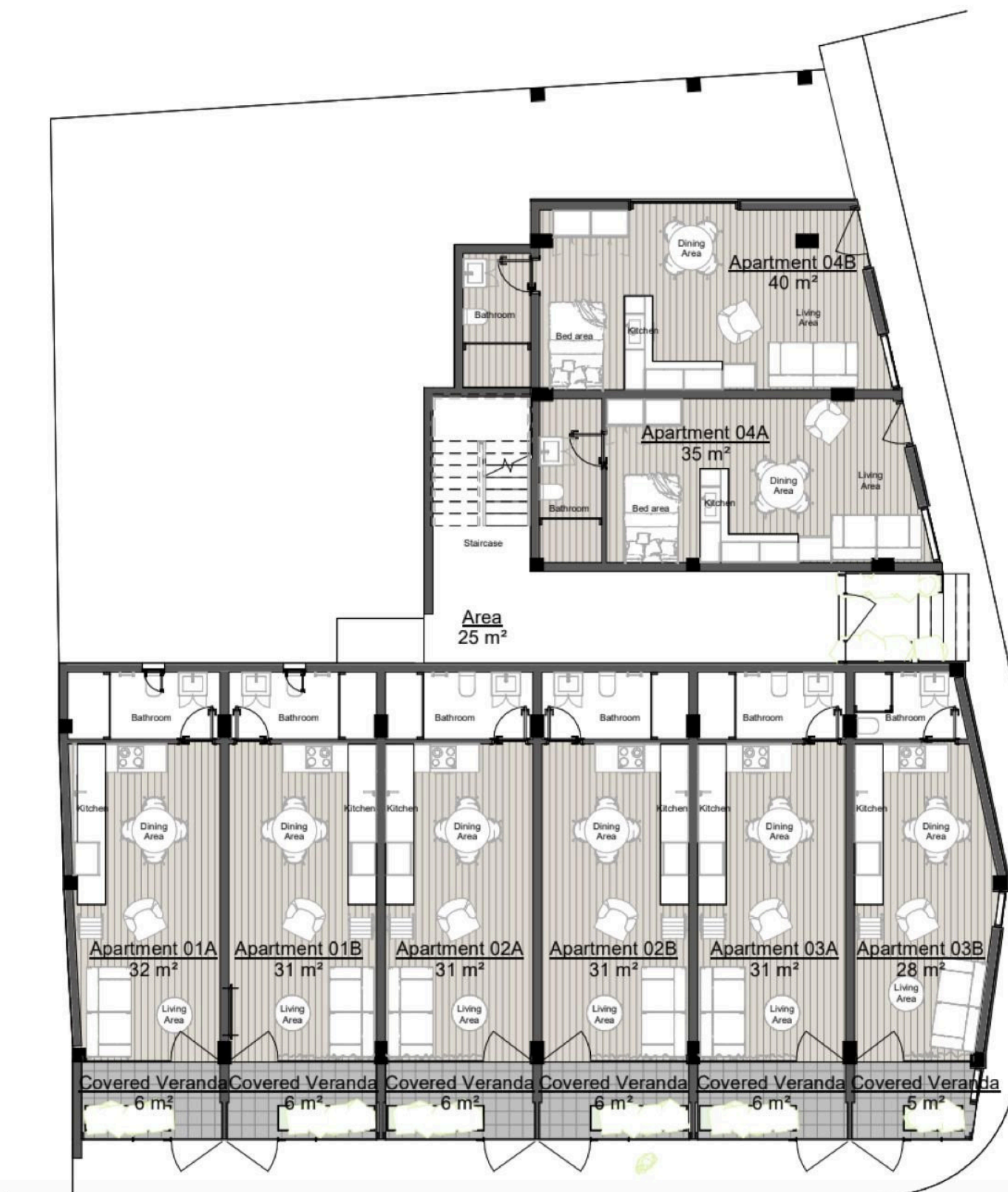
A premier investment opportunity located in the heart of Limassol’s Historical Centre, STAY4 Residences offers 17 modern and stylish apartments, featuring exclusively studio units tailored for contemporary living and strong rental demand.

Residents can stroll in the elegant streets of Limassol’s charming seafront.

Optional private parking adds an extra layer of convenience for homeowners and tenants alike.



Floor plans



Additional information

Facilities

Aircondition, Provision

Solar water heater

Elevator

Storage

Parking, Covered

Features

Balcony

CCTV (provision)

Connected to electric mains

Energy efficient doors/windows

Granite countertops

Modern design

Open plan

Bright

City view

Double glazing

Entrance gate

Heart of city center

Near amenities

Thermal insulation

CCTV

Combined kitchen and dining area

Easy access to main roads

Entrance gate, automated

Investment opportunity

Near bus route

Distances

Amenities



600 m

Airport



65 km

Sea



100 m

Public transport



200 m

Schools



500 m

Resort



800 m

Contact us



George Sergiou

📞 (+357) 94055813

📧 info@lextrusrealestate.com

