



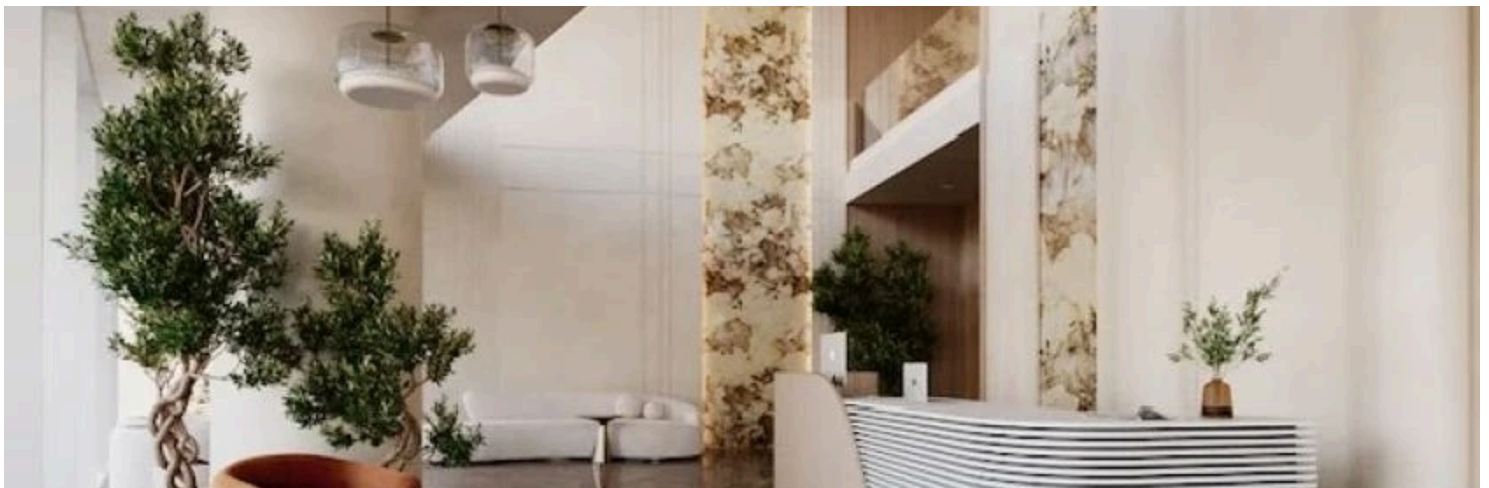
#11539

# ? Prestigious "A+" Business Center in Central Limassol (11539)

📍 Germasogeia, Limassol

€28,500 /month







# Overview

## Specifications

Covered

 481 m<sup>2</sup>

Type	Commercial Building	Furnished	Unfurnished
Plot	2404 m <sup>2</sup>	Structure	Concrete
Status	Under construction	Facade	Concrete
Year of construction	2025	Energy efficiency rating	 A

## Description

? Prestigious "A+" Business Center in Central Limassol (11539)

? Location: Limassol City Center

? Property Type: Commercial Office | Business Center

?? Delivery: June 2025

? Monthly Rent: €28,500 + VAT

?? Parking: 10 Spaces Included

Designed to accommodate modern businesses, this commercial gem combines cutting-edge architecture, sustainable features, and unmatched functionality.

? Key Features:

Covered Area: 481 m<sup>2</sup> | 6th Floor

Lobby & Common Areas: 84 m<sup>2</sup>

Total Space Offered: 565 m<sup>2</sup>

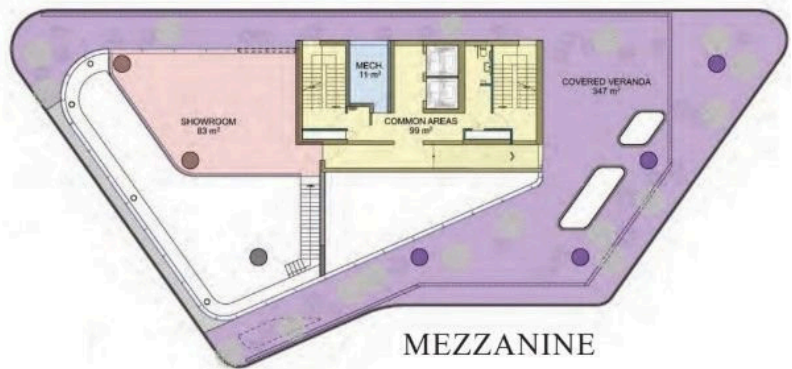
Panoramic Views of the Mediterranean, city, and mountains

Flexible floor plans adaptable to your business needs



# Floor plans

GROUND FLOOR



MEZZANINE

1<sup>st</sup> FLOOR



2<sup>nd</sup> Floor -6<sup>th</sup> FLOOR



# Additional information

## Facilities

Aircondition, Provision

Heating, Provision

Elevator

Parking, Underground

Gym

## Features

24-hour security

Business facilities

Ceramic tiles

Connected to electric mains

Easy access to main roads

Entrance gate, automated

Fireproof entrance doors

Near amenities

Panoramic view

Reception

Secure door

Thermal insulation

Alarm system (provision)

CCTV

City view

Double glazing

Energy efficient doors/windows

Excellent condition

Luxury specifications

Near bus route

Pipe-in-pipe plumbing system

Roof garden

Server room

Veranda

Automation system

CCTV (provision)

Closed offices

Earthquake-resistant structure

Entrance gate

Fiber optics

Mountain view

Near public transport

Private bathrooms

Sea view

Sound insulation

## Distances

Amenities



200 m

Airport



55 km

## Contact us



**Stefania Spyridou**

📞 (+357) 99810880

✉️ [stephaniaspyridou@gmail.com](mailto:stephaniaspyridou@gmail.com)

