



#11249

# 1 Bedroom Apartment in Kissonerga with Private Garden (11249)

📍 Kissonerga, Paphos

€230,000 +VAT











# Overview

## Specifications

Bedrooms		Bathrooms		Covered	
 1		 1		 51 m <sup>2</sup>	
Type		Apartment			
Toilets		1			
Status		Under construction			
Year of construction		2026			
Furnished		Unfurnished			
		Structure		Concrete	
		Facade		Concrete	
		Communal charge frequency		Monthly	
		Energy efficiency rating		 A+	

## Description

1 Bedroom Apartment in Kissonerga with Private Garden (11249)

PRICE : EUR 230.000 +VAT

A boutique residential project that redefines modern coastal living. This exclusive development features 12 luxurious apartments, each thoughtfully designed to offer breathtaking views of the Mediterranean Sea. Whether you're seeking a serene retreat or a high-potential real estate investment, is the perfect destination for upscale living in Cyprus.

Contemporary Architecture: Clean lines, open layouts, and expansive windows bring in natural light and showcase the stunning sea views.

Elegant Interiors: Apartments range from 51 to 114 sq. meters, featuring high-quality materials, modern kitchens, and luxurious bathrooms.

Private Balconies: Enjoy uninterrupted views of the Mediterranean from your private outdoor space, perfect for relaxing or entertaining.

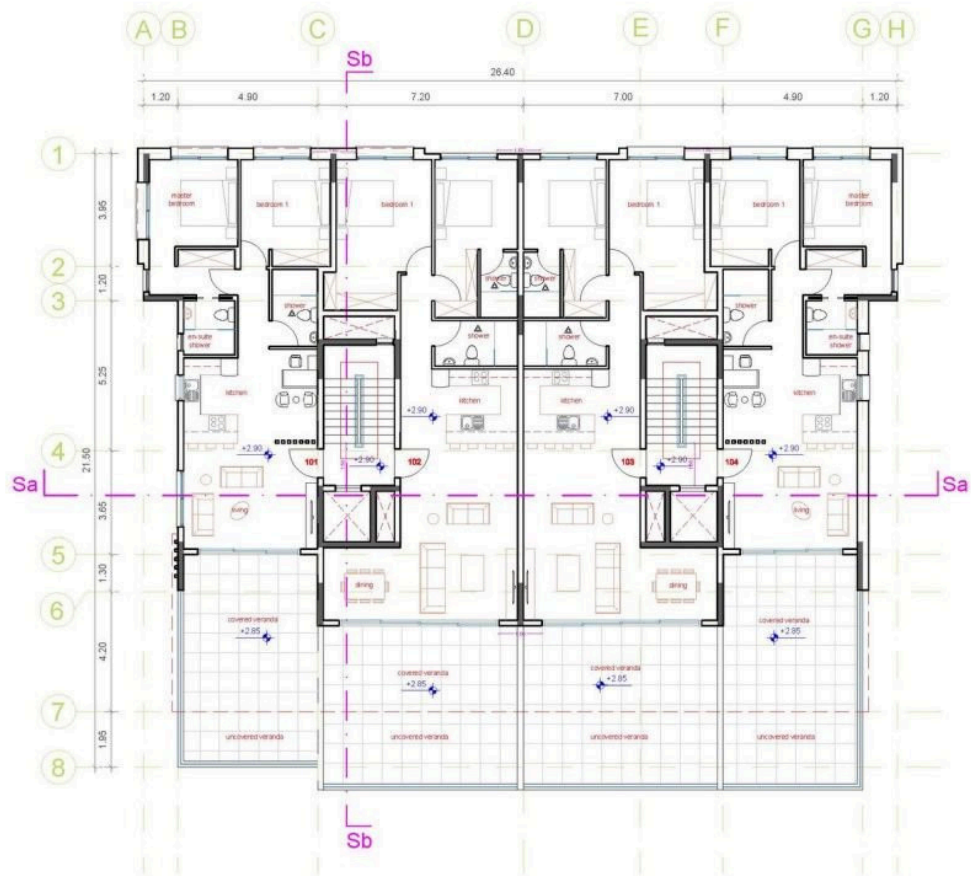
Cliffside Location: Positioned on the edge of a scenic cliff, the development ensures unobstructed views and a tranquil ambiance.

Proximity to the Sea: Just 5 km from the nearest beach, residents enjoy the charm of coastal living with easy access





# Floor plans



# Additional information

## Facilities

Aircondition, Provision

Parking, Covered

Elevator

Solar water heater

Heating, Provision

Storage

## Features

24-hour security

CCTV

Connected to electric mains

Energy efficient doors/windows

Garden

Investment opportunity

Near amenities

Rental potential

Veranda

Balcony

CCTV (provision)

Double glazing

Entrance gate

Garden, large

Kitchen appliances

Open plan

Shower

Veranda, large

Bright

Combined kitchen and dining area

Easy access to main roads

Entrance gate, automated

Granite countertops

Modern design

Pressurized water system

Thermal insulation

## Distances

Airport



22.9 km

## Contact us



**Stefania Spyridou**

📞 (+357) 99810880

✉️ [stephaniaspyridou@gmail.com](mailto:stephaniaspyridou@gmail.com)

