

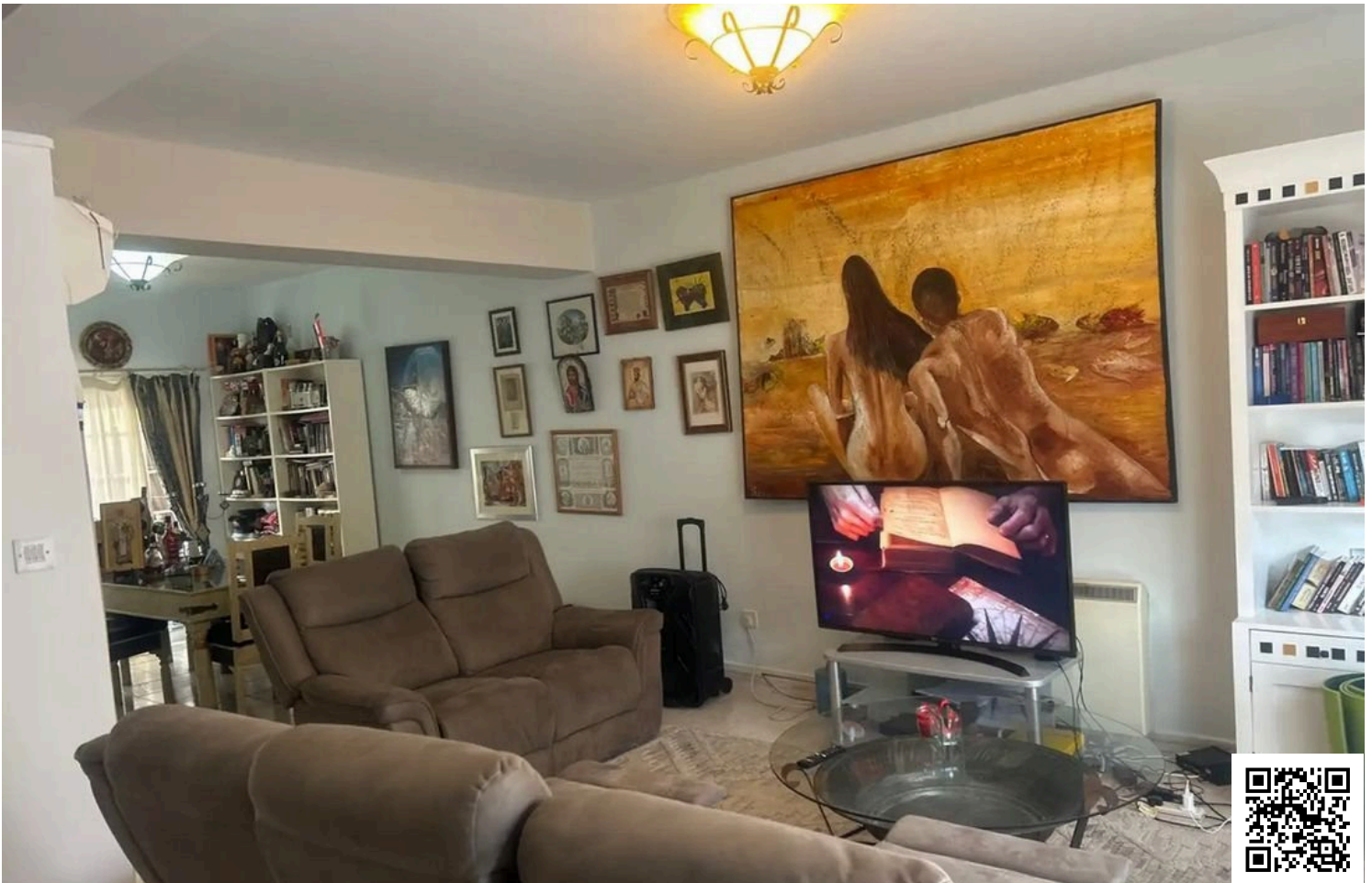


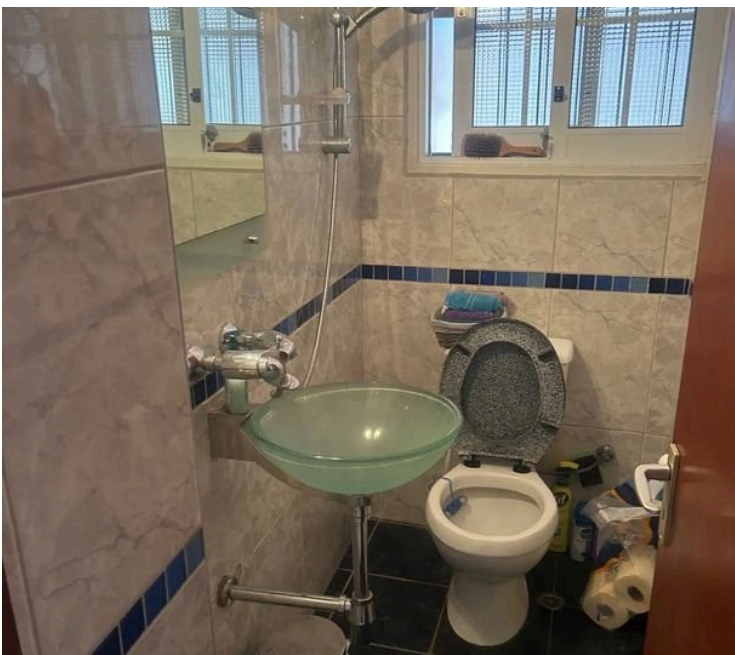
#11145

3 Bedroom Semi-Detached House in Potamos Germasogeia Limassol (11145)

📍 Germasogeia, Limassol

€525,000





Overview

Specifications

Bedrooms



3

Bathrooms



1

Covered

150 m²

Type	Semi-Detached House
Toilets	1
Plot	270 m²
Status	Resale
Year of construction	1995

Title deed	Yes
Furnished	Fully furnished
Structure	Concrete
Facade	Concrete

Description

3 Bedroom Semi-Detached House in Potamos Germasogeia Limassol (11145)

For sale is a charming semi-detached house located in the desirable area of Germasogeia. This spacious 150 m² home offers a comfortable and inviting atmosphere, perfect for families or anyone looking for ample living space. With three bedrooms and one bathroom, there's plenty of room for everyone.

Built in 1995, this property has been well-maintained and is offered fully furnished, allowing you to move in with ease. The home is part of a gated complex, providing added security and peace of mind. Residents can enjoy a communal swimming pool, ideal for relaxing and socializing on sunny days.

Germasogeia is known for its vibrant community, combining modern conveniences with a laid-back environment. You'll find a variety of amenities nearby, including shops, restaurants, and leisure activities, making it a perfect place for both relaxation and entertainment.

Don't miss out on this fantastic opportunity to own a beautiful home in Germasogeia. Contact Lextrus Real Estate today for more information and to schedule a viewing.



Additional information

Facilities

Aircondition, Split system

Landscaped garden

Solar water heater

Gated complex

Parking, Garage, double

Storage

Heating, Central

Pool, Communal

Features

Bright

Connected to electric mains

Entrance gate, automated

Investment opportunity

Open plan

Veranda

CCTV

Easy access to main roads

Garden

Near amenities

Quiet area

City view

Entrance gate

Garden, large

Near bus route

Rental potential

Distances

Amenities

 200 m

Airport

 50 km

Sea

 700 m

Public transport

 200 m

Schools

 600 m


Resort

 650 m

Contact us



Stavroula Michail

 (+357) 99810880

 stavroulamichail.lextrus@gmail.com

