



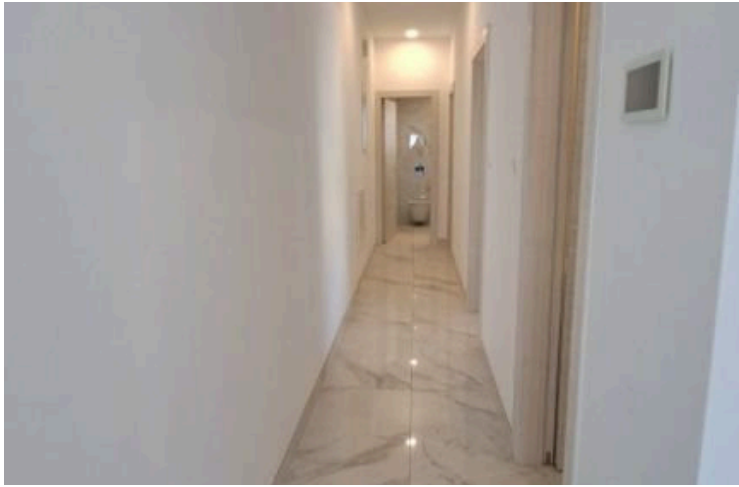
#11097

# Modern Fully Furnished Apartment in Germasogeia Tourist Area (11097)

📍 Germasogeia Tourist Area, Limassol




**€2,800** /month





# Overview

## Specifications

Bedrooms		Covered	
 2		 96 m <sup>2</sup>	
Type	Apartment	Furnished	Fully furnished
Showers	1	Structure	Concrete
Toilets	1	Facade	Concrete
Status	Key ready	Communal charge frequency	Monthly
Year of construction	2021	Energy efficiency rating	 A+

## Description

Modern Fully Furnished Apartment in Germasogeia Tourist Area (11097)

For sale is a stunning key-ready apartment in the vibrant Germasogeia Tourist Area, perfect for those seeking a modern lifestyle. Located on the fourth floor of a secure, gated complex, this apartment offers 96 m<sup>2</sup> of beautifully designed internal space. With two spacious bedrooms, it is ideal for families or as a holiday retreat.

Constructed in 2021, the apartment features contemporary furnishings and finishes, ensuring a stylish and comfortable living experience. Enjoy the convenience of an elevator access to your unit, while the basement parking provides added security for your vehicle.

The Germasogeia Tourist Area is well-known for its lively atmosphere, beautiful beaches, and an abundance of dining and entertainment options. You will find various shops, cafes, and recreational activities just a short stroll away, making it a desirable location for residents and visitors alike.

This modern apartment offers the perfect blend of luxury and convenience in an attractive setting. Don't miss this opportunity to own a beautiful home in one of the most sought-after areas. For more information or to arrange a viewing, contact Lextrus Real Estate today.

# Additional information

## Facilities

Aircondition, Split system

Parking, Covered

Elevator

Solar water heater

Gated complex

Storage

## Features

Balcony

Connected to electric mains

Guest WC

Open plan

Bright

Easy access to main roads

Near amenities

Roof garden

Combined kitchen and dining area

Granite countertops

Near bus route

Veranda

## Distances

Amenities

 3 km

Airport

 3.5 km

Sea

 1 km

Schools

 3 km


Resort

 4 km

## Contact us



**George Sergiou**

 (+357) 94055813

 [info@lextrusrealestate.com](mailto:info@lextrusrealestate.com)