



#11085

? Luxe Living at Souni Limassol - Elegant 2-Bedroom Villas ?(11085)

📍 Souni, Limassol





€310,000 +VAT





Overview

Specifications

Bedrooms		Bathrooms		Covered	
 2		 1		 72 m ²	
Type	Detached Villa				
Toilets	2				
Plot	225 m ²				
Status	Off plan				
Year of construction	2026				
Furnished	Unfurnished				
Structure	Concrete				
Facade	Concrete				
Energy efficiency rating	 A				

Description

? Luxe Living at Souni Limassol - Elegant 2-Bedroom Villas ?(11085)

@EUR 310.000 +VAT

Step into a world of opulence with our exclusive residential development on the outskirts of Limassol. Experience the epitome of luxury in our stunning 2-bedroom villas, meticulously designed to offer unrivaled comfort and sophistication.

Property Details:

Covered Area: 72 m2

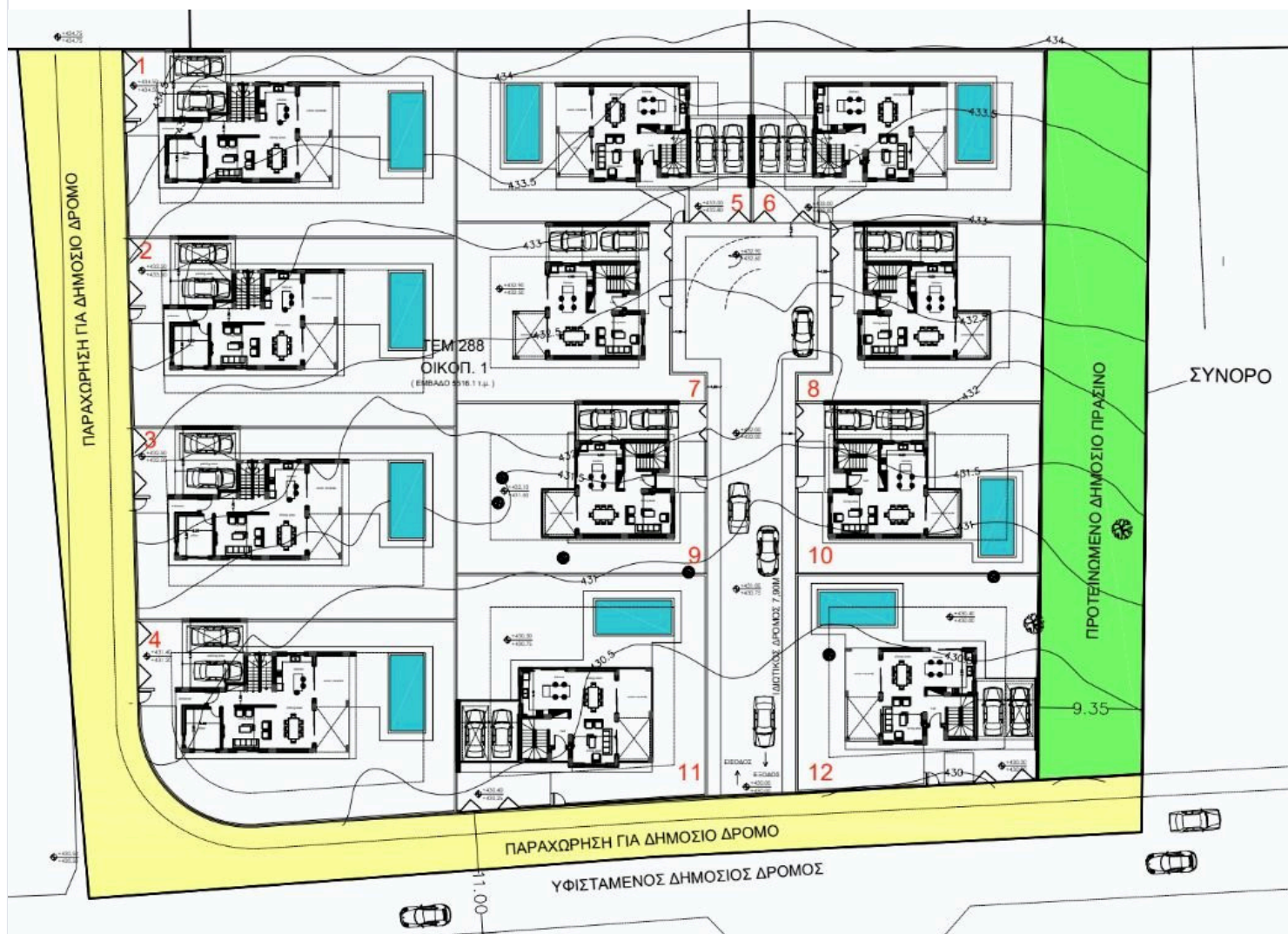
Plot Size: 225 m2

Key Features & Amenities:

- Underfloor Central Heating
- Custom Designed Kitchens & Wardrobes
- Granite Worktops
- Fully Landscaped Garden Areas
- Pressurized Water System
- Pipe-in-Pipe Plumbing System
- Solar Panel Water Heating



Floor plans



Additional information

Facilities

Aircondition, Provision

Parking, Uncovered

Solar water heater

Gated complex

Pool, Private

Storage

Heating, Provision

Solar photovoltaic panels (provision)

Features

Balcony

Central TV system

Country view

Easy access to main roads

Entrance gate, automated

Garden, large

Internal stairs

Mountain view

Pressurized water system

Shower

Veranda

Barbeque

Central satellite system

Double glazing

En suite shower

Fitted wardrobes

Granite countertops

Luxury specifications

Near amenities

Quiet area

Spacious rooms

Veranda, large

Bath

Central sound system

Easy access to highway

Entrance gate

Garden

Guest WC

Modern design

Open plan

Roof garden

Thermal insulation

Village view

Distances

Amenities



580 m

Sea



16 km

Contact us



Stefania Spyridou

☎ (+357) 99810880

✉ stephaniaspyridou@gmail.com

