



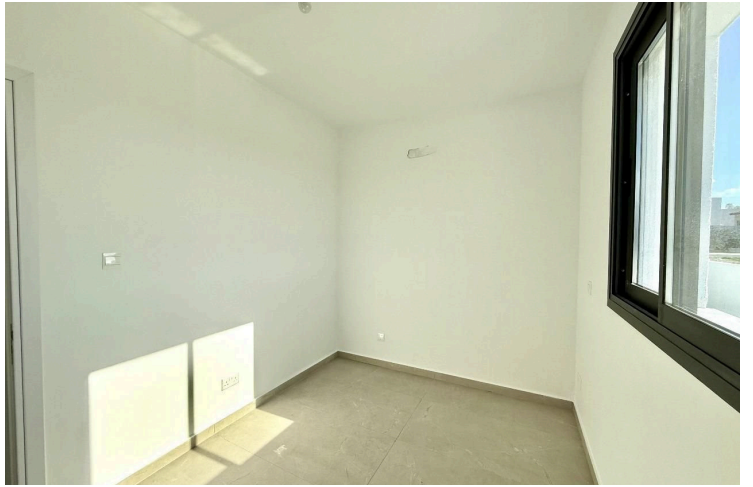
#10963

Modern Ground-Floor Apartment in Prime Livadia Location – Perfect Blend of Comfort & Convenience (10963)

📍 Livadia, Larnaca

€1,200 /month





Overview

Specifications

Bedrooms

 3


Bathrooms

 2

Covered

 79.4 m²

Type	Apartment
Toilets	2
Status	Key ready
Year of construction	2025
Furnished	Optional furnished

Structure	Concrete
Facade	Concrete
Communal charge frequency	Monthly
Energy efficiency rating	 A

Description

Modern Ground-Floor Apartment in Prime Livadia Location – Perfect Blend of Comfort & Convenience (10963)

Located in the highly sought-after Livadia area, this brand-new ground-floor apartment offers the perfect blend of modern living and convenience. Just a 5-minute drive to the sea, it is within close proximity to schools, supermarkets, and local amenities. With easy access to major highways, commuting is effortless. Whether you're working in the city or enjoying a weekend getaway, this location ensures you're never far from everything you need.

This stunning apartment features a spacious 79.4 sqm interior with an expansive 40 sqm front veranda, ideal for outdoor relaxation, dining, or entertaining guests. The sizable veranda provides a wonderful space to enjoy the Mediterranean climate, perfect for hosting gatherings or unwinding after a long day. A private rear garden offers additional space for gardening or leisure activities, while the gated parking area provides secure parking for three to four vehicles. The owner is currently in the process of upgrading the parking area with an automated gate, adding even more convenience and security.

Inside, you'll find three generously sized bedrooms with floor-to-ceiling wardrobes, offering plenty of storage. Two stylish bathrooms feature sleek finishes and modern fixtures, including newly installed shower doors for added comfort and practicality. The open-plan living area seamlessly connects to the kitchen and outdoor spaces, creating a bright and inviting atmosphere. The brand-new kitchen is designed with ample cabinetry and comes fully equipped with top-of-the-line kitchen appliances, ready for immediate use.

Large energy-efficient windows allow for plenty of natural light, while air conditioning throughout ensures year-round comfort. The apartment also benefits from newly installed roller blinds for added privacy and light control, allowing

Additional information

Facilities

Aircondition, Split system

Heating, Split system

Parking, Covered

Solar water heater

Storage

Features

Bright	Ceramic tiles	Double glazing
Easy access to highway	Easy access to main roads	En suite bathroom
Energy efficient doors/windows	Entrance gate, automated	Garden
Granite countertops	High ceilings	Investment opportunity
Kitchen appliances	Modern design	Open plan
Pets allowed	Quiet area	Roller blinds
Shower	Tile flooring	Veranda
Veranda, large		

Distances

Amenities

 200 m

Airport

 18 km

Sea

 500 m


Schools

 600 m

Contact us



Xristos Ioannidis

 (+357) 95146944

 stavroulamichail@lextrusrealestate.com