



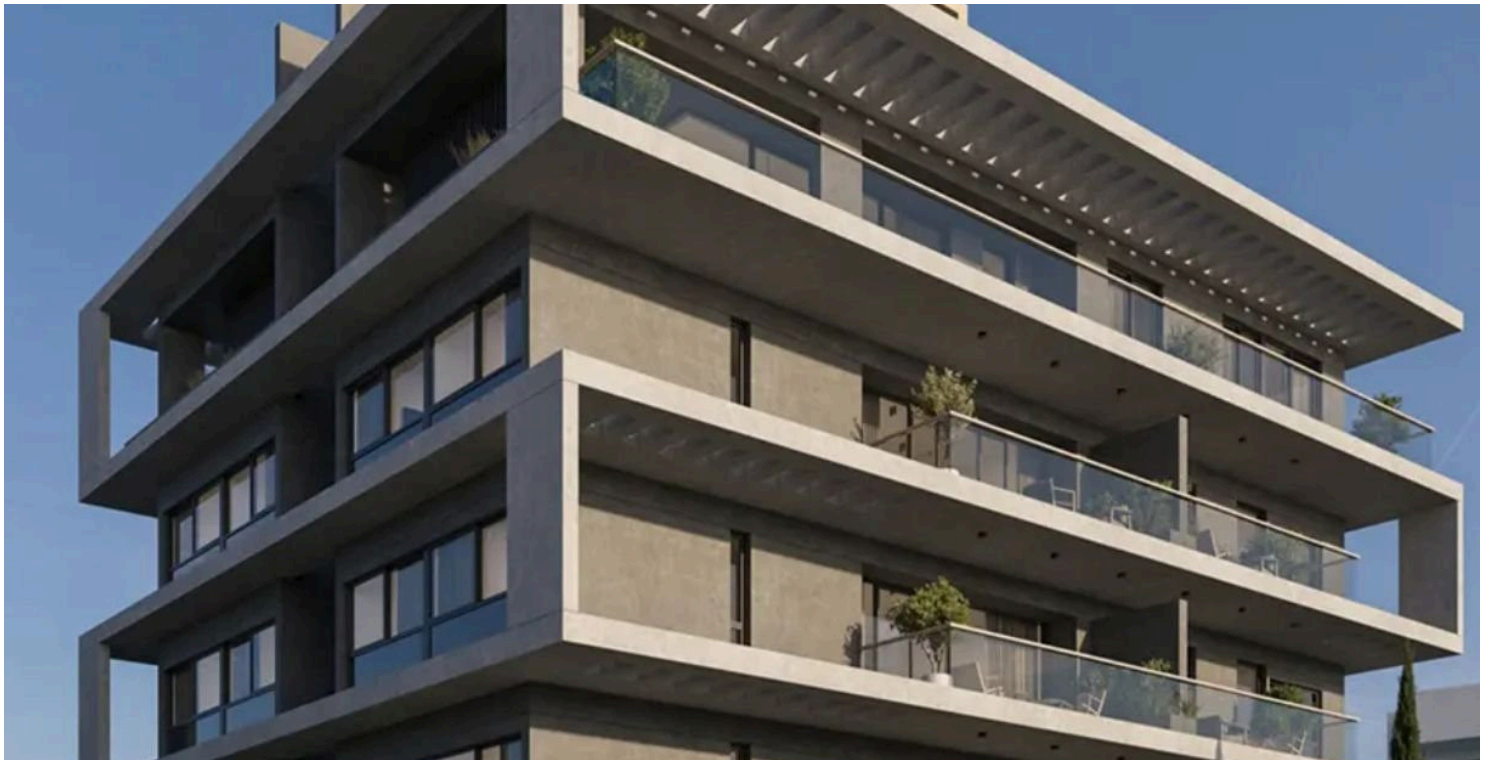
#10911

# Stylish 1 Bedroom Apartment for Sale in the Heart of Germasogeia (10911)

📍 Germasogeia, Limassol





€360,000 +VAT





# Overview

## Specifications

Bedrooms		Bathrooms		Covered	
 1		 1		 50 m <sup>2</sup>	
Type	Apartment				
Toilets	1				
Status	Under construction				
Year of construction	2026				
Furnished	Unfurnished				
Structure	Concrete				
Facade	Concrete				
Communal charge frequency	Monthly				
Energy efficiency rating	 A+				

## Description

Stylish 1 Bedroom Apartment for Sale in the Heart of Germasogeia (10911)

Introducing a brand-new apartment for sale in the heart of Germasogeia, a vibrant area known for its charming blend of modern convenience and natural beauty. This up-and-coming neighborhood offers an array of shops, eateries, and stunning views, making it an ideal location for those seeking both lifestyle and comfort.

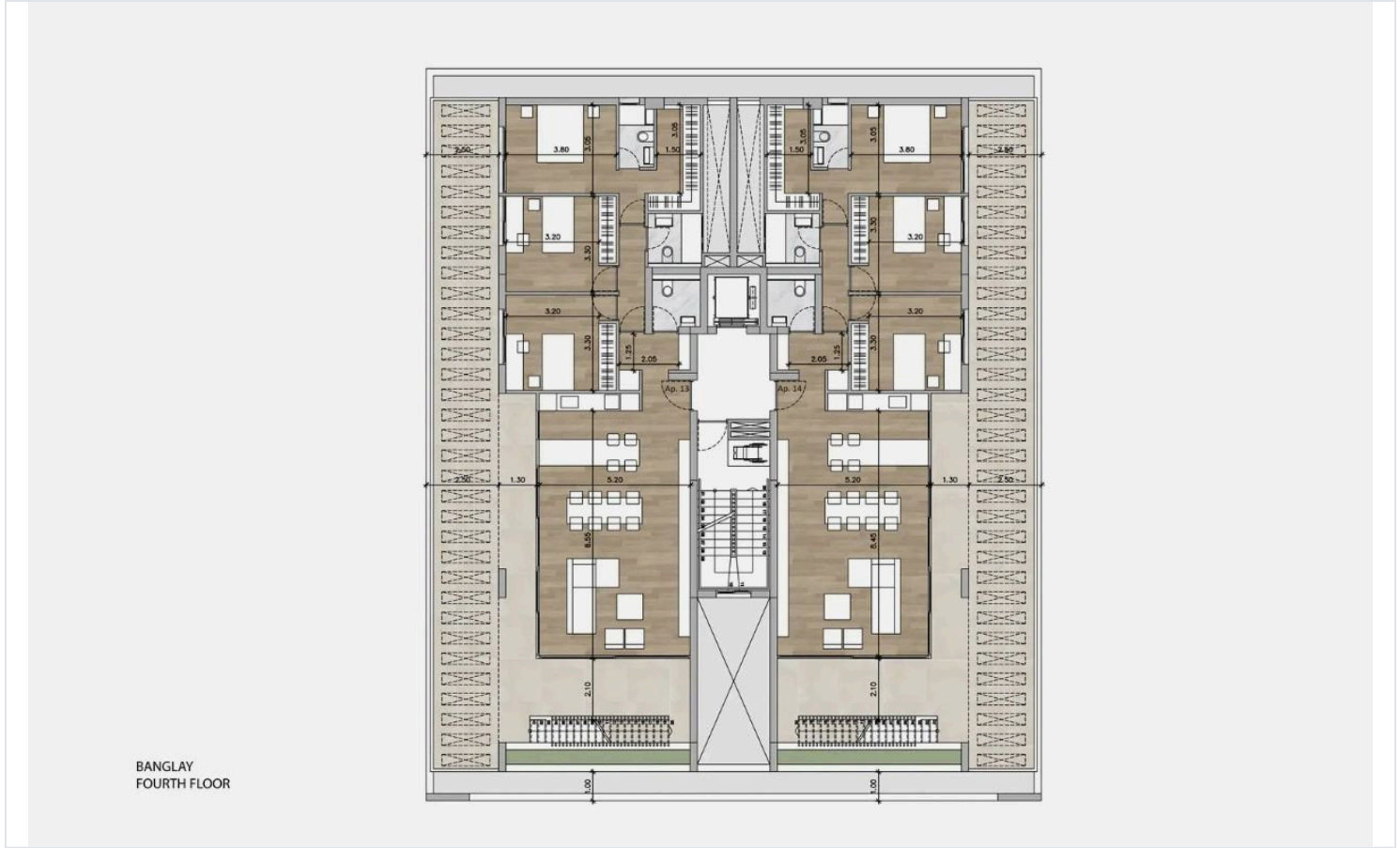
The apartment spans 50 m<sup>2</sup> of thoughtfully designed internal space and features one cozy bedroom, perfect for singles or couples. With modern architecture and high-quality finishes, this under-construction property is set to be completed in 2026, ensuring contemporary living at its finest. Residents will also enjoy the convenience of a basement, providing extra storage and parking options.

Germasogeia is well-regarded for its serene environment, proximity to the coast, and vibrant community, attracting individuals looking for both relaxation and entertainment. The area is well-connected, making it easy to explore nearby attractions.

Don't miss the chance to own a piece of this promising location. For more details on this future home and to explore your options, contact Lextrus Real Estate today.





[illegible]

BANGLAY  
FOURTH FLOOR

# Additional information

## Facilities

Aircondition, Provision

Parking, Covered

Elevator

Solar water heater

Heating, Provision

Storage

## Features

Bright

Double glazing

Modern design

Rental potential

Veranda, large

City view

Granite countertops

Open plan

Thermal insulation

Connected to electric mains

Investment opportunity

Quiet area

Veranda

## Distances

Amenities

 2 km

Sea

 1 km

Public transport

 2 km

Schools

 500 m

## Contact us



**George Sergiou**

 (+357) 94055813

 [info@lextrusrealestate.com](mailto:info@lextrusrealestate.com)

