

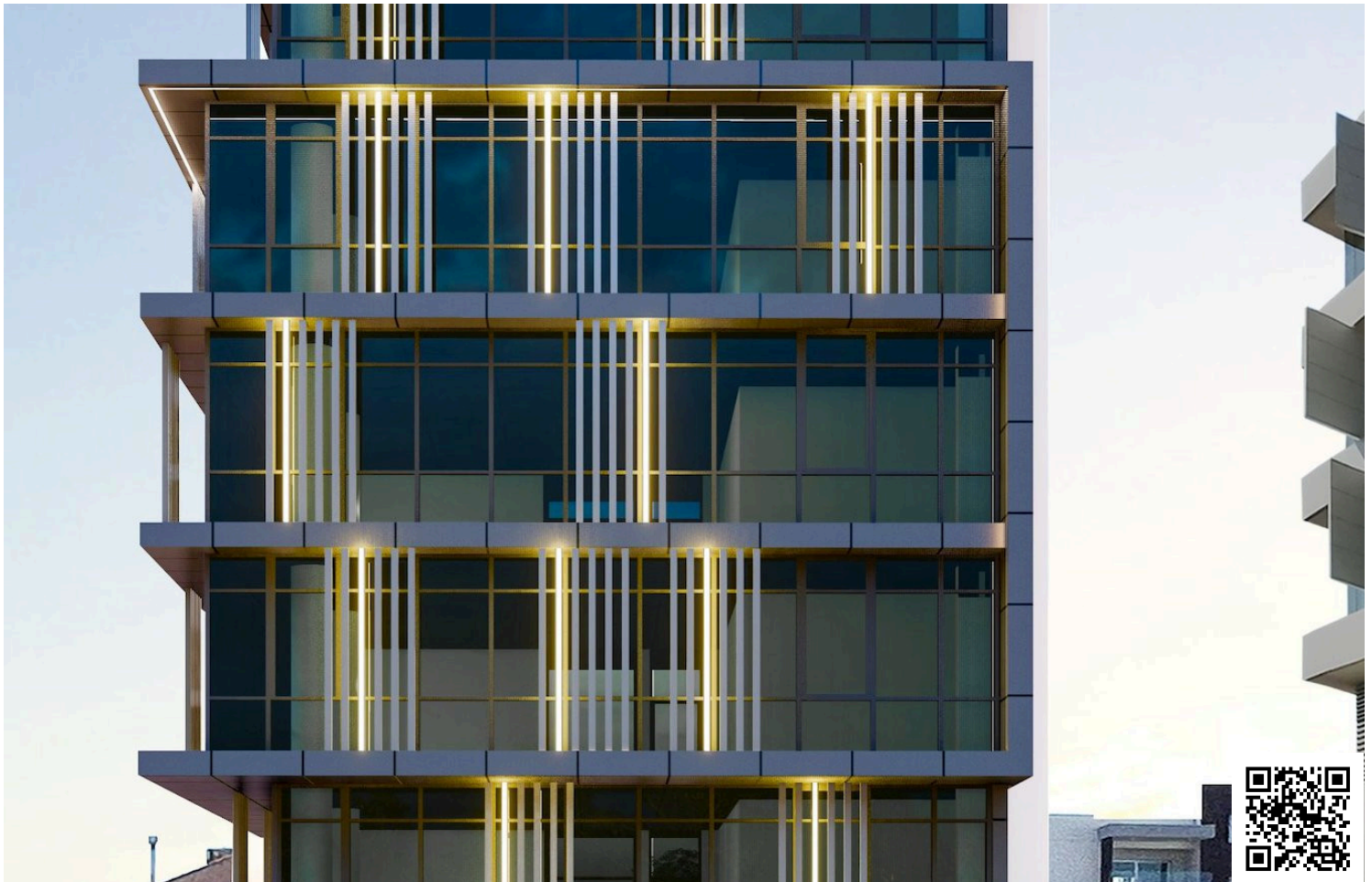


#10880

# A PREMIER FIVE-FLOOR BUSINESS CENTRE FOR SALE IN LIMASSOL (10880)

📍 Kato Polemidia, Limassol

€5,500,000 +VAT





# Overview

## Specifications

Covered

 828 m<sup>2</sup>

Type	Commercial Building
Covered veranda	169 m <sup>2</sup>
Uncovered veranda	100 m <sup>2</sup>
Basement	420 m <sup>2</sup>
Covered parking	105 m <sup>2</sup>

Status	Under construction
Year of construction	2025
Structure	Concrete
Energy efficiency rating	 A+

## Description

Impetus is a distinguished landmark business centre strategically positioned in one of Limassol’s primary commercial hubs. This exceptional five-floor building offers premium office spaces, meticulously designed to meet the highest standards, ensuring an environment that aligns with the expectations of leading businesses. The floor-to-ceiling windows provide breathtaking city and mountain views, complementing the open-plan layout and fostering a bright and inspiring workspace.

### PRIME LOCATION

Impetus is ideally situated on Spyrou Kyprianou Avenue in the Kato Polemidia area, offering convenient access to key business and lifestyle amenities, including:

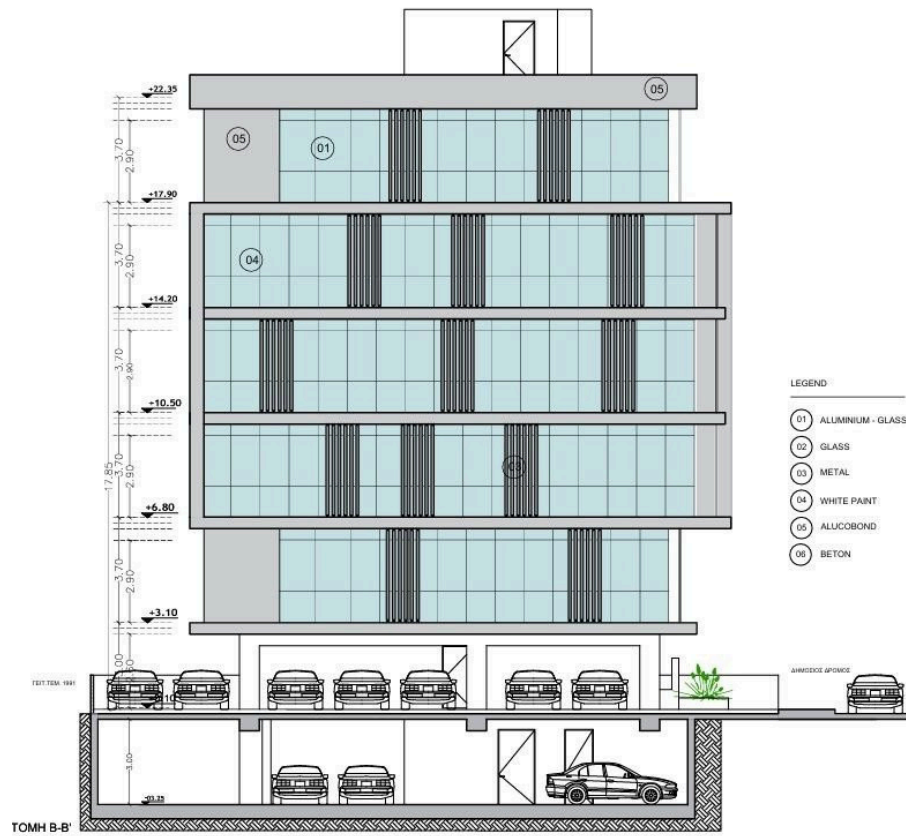
- City Centre: ~3.0 km
- Casino: ~4.5 km
- Commercial Port: ~3.5 km
- Limassol Marina: ~3.0 km
- Motorway: ~700 m
- Seafront: ~3.5 km

Designed to accommodate modern business requirements, this five-floor commercial building provides spacious and efficient work environments that enhance both creativity and productivity. The architectural design, combined with high-end materials and advanced infrastructure, establishes this building as a premier choice for corporate offices.

### ARCHITECTURE & DESIGN



# Floor plans



# Additional information

## Facilities

Aircondition, Provision

## Features

CCTV (provision)

High ceilings

Sanitary ware

Easy access to highway

Kitchen

Fire detector

Municipal water/sewage

## Distances

Airport



50 km

Sea



3.5 km

## Contact us



**Eleni Skalkou**

☎ (+357) 94599684

✉ [eleniskalkou@gmail.com](mailto:eleniskalkou@gmail.com)

