



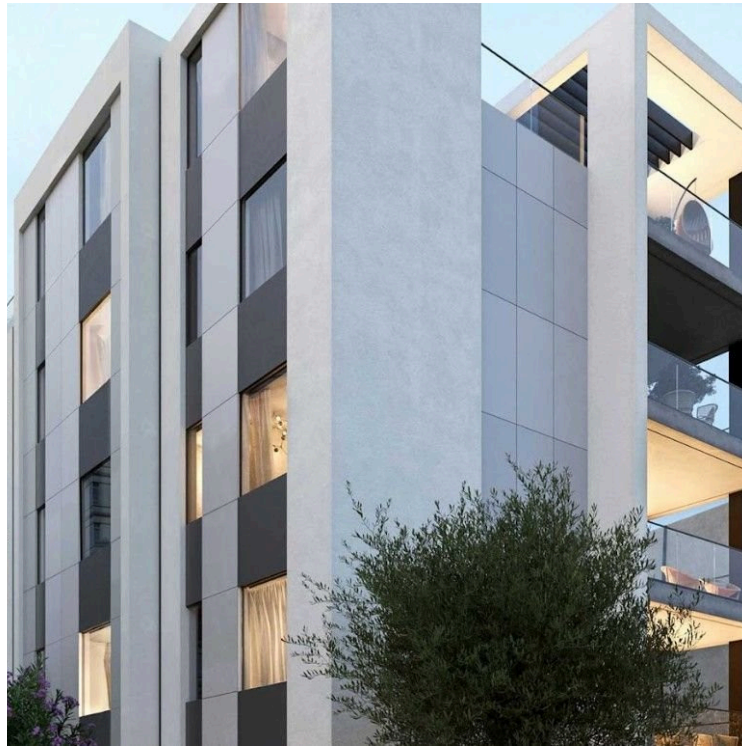
#10831

Luxury Penthouse with Private Pool in Germasogeia, Limassol (10831)

📍 Germasogeia, Limassol

€1,410,000 +VAT





Overview

Specifications

Bedrooms

 2


Bathrooms

 4

Covered

 106 m²

Type	Apartment
Toilets	4
Status	Off plan
Year of construction	2027
Furnished	Unfurnished

Structure	Concrete
Facade	Concrete
Communal charge frequency	Monthly
Energy efficiency rating	 A

Description

Luxury Penthouse with Private Pool in Germasogeia, Limassol (10831)

This stunning 2-bedroom, 4-bathroom penthouse is located within an exclusive, gated residential community in the heart of Limassol's vibrant Germasogeia tourist area. Situated just 200 meters from the sea and the renowned Dassoudi eucalyptus park, this prime location offers both luxury and convenience.

Perched on the top floor, this penthouse spans 106sqm of elegant living space and boasts a private rooftop terrace with a swimming pool, offering breathtaking views and the ultimate relaxation experience. Inside, the high ceilings of 3.15 meters create an airy and open feel, while semi-solid parquet floors run throughout all rooms. The bathrooms feature marble flooring and wall finishes, enhancing the overall sense of sophistication. Large thermal aluminum window frames with double glazing provide insulation and natural light, while premium European kitchen cabinets and wardrobes add to the apartment's refined design.

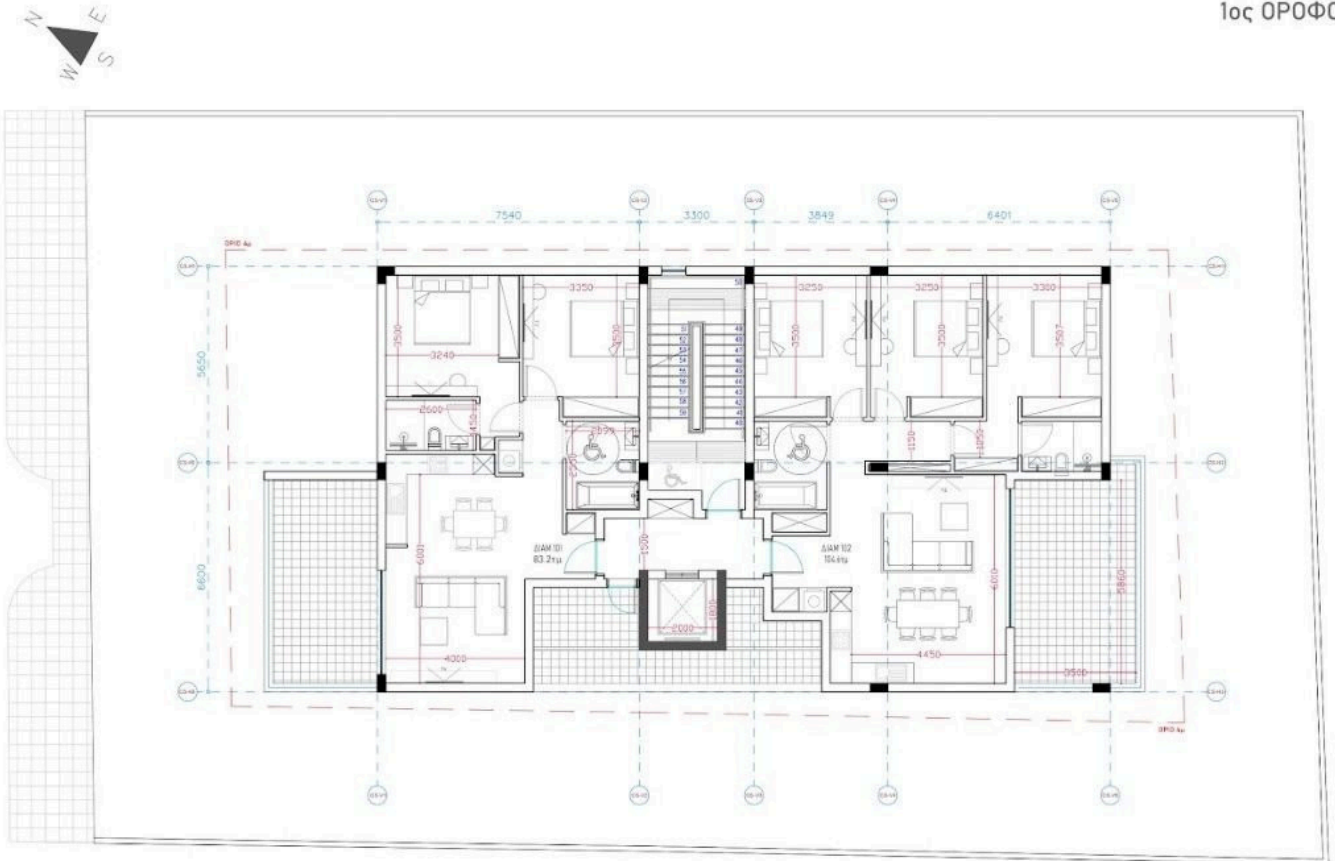
For year-round comfort, the penthouse is equipped with underfloor heating and a central VRV air-conditioning system, ensuring a pleasant living environment in any season. A security entrance door and an intercom system provide enhanced safety and convenience. With ample parking space and a location that blends privacy with easy access to the beach, dining, and entertainment, this penthouse is the epitome of sophisticated living. Off-plan, expected completion in September 2027.

Don't miss out on this rare opportunity! Contact Lextrus Real Estate today to schedule a viewing and experience the luxury firsthand.

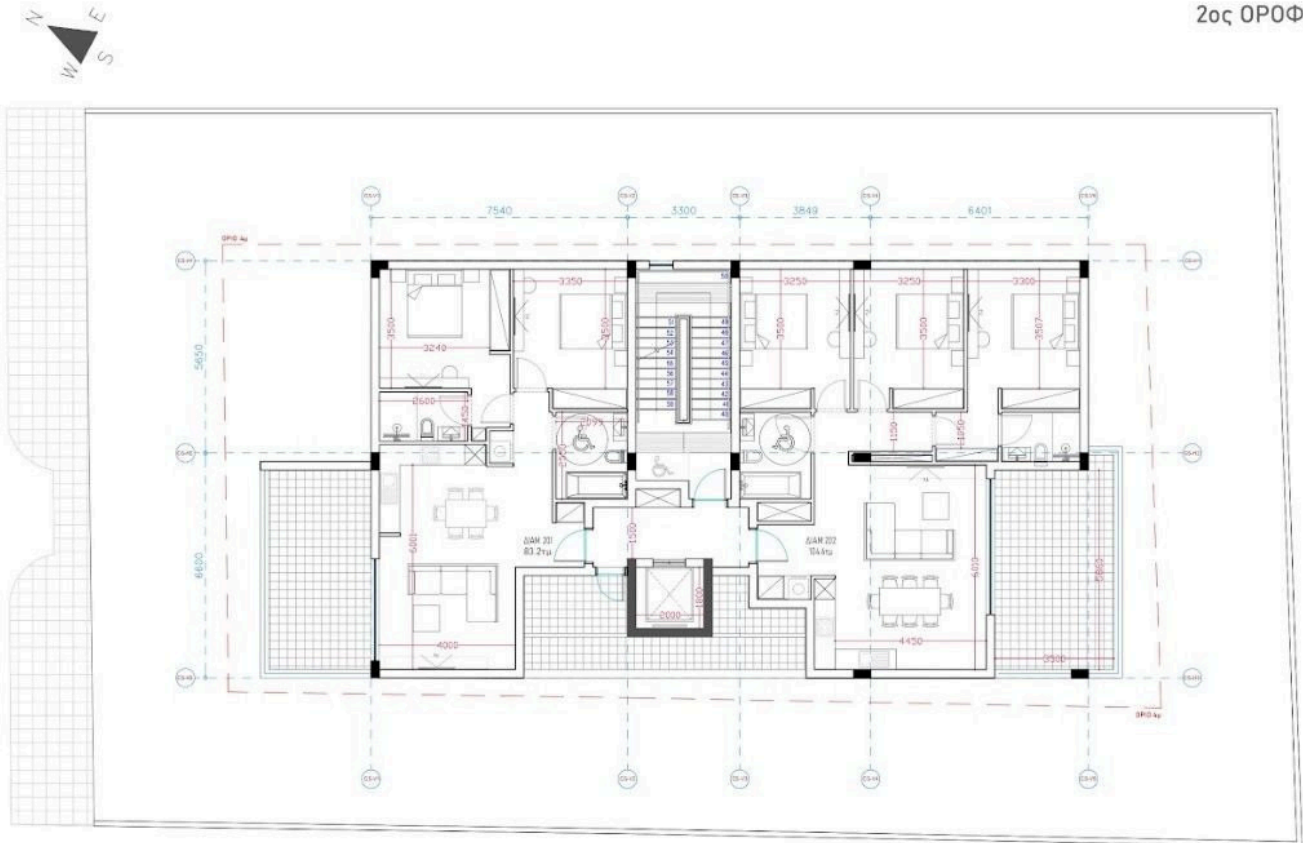


Floor plans

1ος ΟΡΟΦΟΣ



2ος ΟΡΟΦΟΣ



Additional information

Facilities

Aircondition, Provision

Indoor pool, Communal

Storage

Elevator

Parking, Covered

Heating, Underfloor

Solar water heater

Features

24-hour security

Entrance gate

High ceilings

Marble flooring

Pipe-in-pipe plumbing system

Thermal insulation

City view

Entrance gate, automated

Investment opportunity

Modern design

Semi-solid parquet flooring

Veranda

Double glazing

Granite countertops

Luxury specifications

Open plan

Spacious rooms

Veranda, large

Distances

Amenities

 100 m


Sea

 200 m

Contact us



Stefania Spyridou

 (+357) 99810880

 stephaniaspyridou@gmail.com

