



#10830

# Luxury Penthouse with Private Pool in Germasogeia, Limassol (10830)

📍 Germasogeia, Limassol

€1,110,000 +VAT







# Overview

## Specifications

Bedrooms



2

Bathrooms



2

Covered

86 m<sup>2</sup>

Type	Apartment
Toilets	2
Covered veranda	18 m <sup>2</sup>
Roof garden	54 m <sup>2</sup>
Status	Off plan
Year of construction	2027

Furnished	Unfurnished
Structure	Concrete
Facade	Concrete
Communal charge frequency	Monthly
Energy efficiency rating	A

## Description

Luxury Penthouse with Private Pool in Germasogeia, Limassol (10830)

This stunning 2-bedroom, 2-bathroom penthouse is located within an exclusive, gated residential community in the heart of Limassol's vibrant Germasogeia tourist area. Situated just 200 meters from the sea and the renowned Dassoudi eucalyptus park, this prime location offers both luxury and convenience. Off-plan, expected completion in September 2027.

Perched on the top floor, this penthouse spans 86 sqm of elegant living space and boasts a private rooftop terrace with a swimming pool, offering breathtaking views and the ultimate relaxation experience. Inside, the high ceilings of 3.15 meters create an airy and open feel, while semi-solid parquet floors run throughout all rooms. The bathrooms feature marble flooring and wall finishes, enhancing the overall sense of sophistication. Large thermal aluminum window frames with double glazing provide insulation and natural light, while premium European kitchen cabinets and wardrobes add to the apartment's refined design.

For year-round comfort, the penthouse is equipped with underfloor heating and a central VRV air-conditioning system, ensuring a pleasant living environment in any season. A security entrance door and an intercom system provide enhanced safety and convenience. With ample parking space and a location that blends privacy with easy access to the beach, dining, and entertainment, this penthouse is the epitome of sophisticated living.

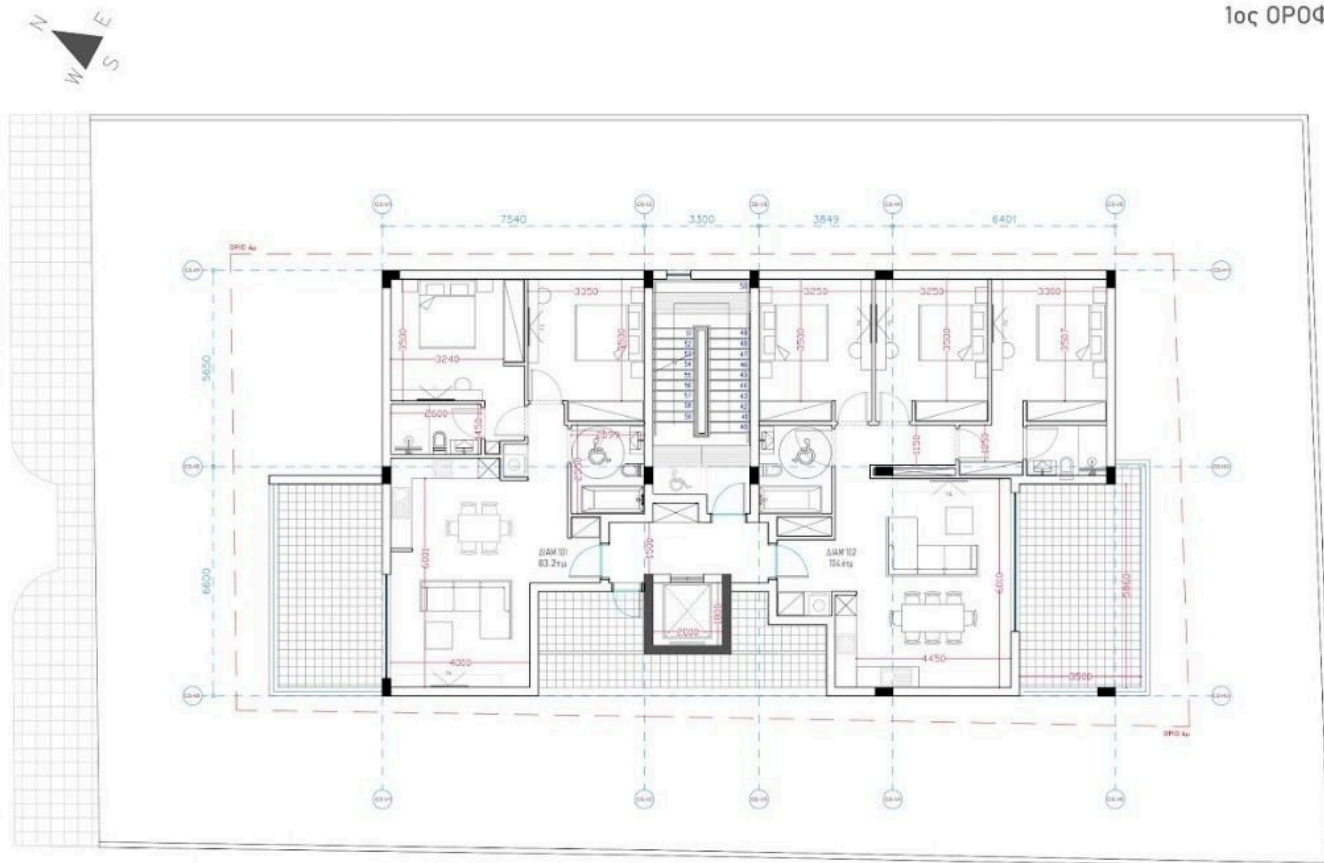
Don't miss out on this rare opportunity! Contact Lextrus Real Estate today to schedule a viewing and experience the luxury firsthand.





# Floor plans

1ος ΟΡΟΦΟΣ



2ος ΟΡΟΦΟΣ



# Additional information

## Facilities

Aircondition, Central system

Indoor pool, Communal

Storage

Elevator

Parking, Covered

Heating, Underfloor

Solar water heater

## Features

24-hour security

Easy access to highway

Entrance gate, automated

Investment opportunity

Open plan

Veranda

Bright

Easy access to main roads

Granite countertops

Marble flooring

Semi-solid parquet flooring

Veranda, large

Double glazing

Entrance gate

High ceilings

Modern design

Thermal insulation

## Distances

Amenities



100 m

Sea




200 m

## Contact us



**Eleni Skalkou**

 (+357) 94599684

 eleniskalkou@gmail.com

