



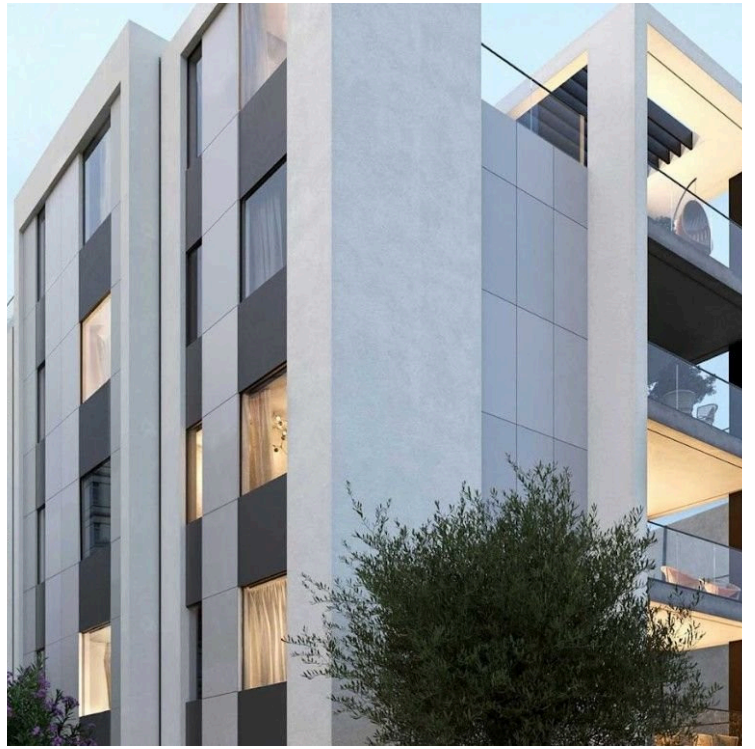
#10829

Luxury 3-Bedroom Apartment in Prime Limassol Location (10829)

📍 Germasogeia, Limassol

€1,030,000 +VAT





Overview

Specifications

Bedrooms



3

Bathrooms



2

Covered

106 m²

Type	Apartment
Toilets	2
Status	Off plan
Year of construction	2027
Furnished	Unfurnished

Structure	Concrete
Facade	Concrete
Communal charge frequency	Monthly
Energy efficiency rating	A

Description

Luxury 3-Bedroom Apartment in Prime Limassol Location (10829)

This 3-bedroom, 2-bathroom apartment is located within an exclusive, gated residential community in the heart of Limassol's vibrant Germasogeia tourist area. Just 200 meters from the sea and the renowned Dassoudi eucalyptus park, it offers a prime location. Off-plan, expected completion in September 2027.

The apartment is on the third floor, covering a total area of 106 sqm and includes top-tier amenities such as a communal swimming pool and ample parking space. Inside, you'll find high-quality features such as semi-solid parquet floors throughout all rooms, marble flooring and wall finishes in the bathrooms, and high ceilings reaching 3.15 meters.

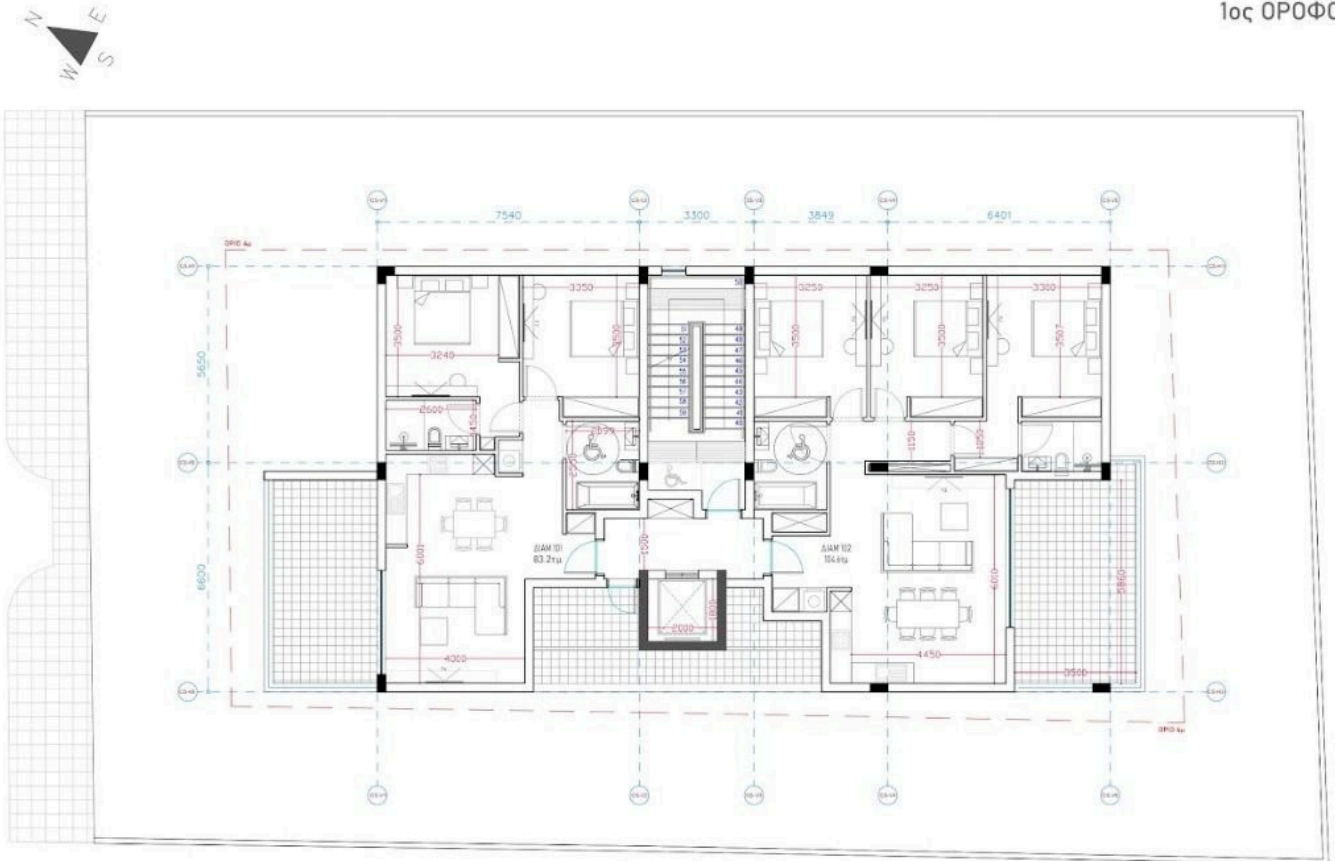
The apartment also boasts security entrance doors, an intercom system, underfloor heating, and a central VRV air-conditioning system. Additionally, it offers high-quality sanitary ware from European brands, thermal aluminum window frames with double glazing, and premium kitchen cabinets and wardrobes from European brands, making it an exceptional living space.

Don't miss out on the opportunity to own this lovely apartment in a sought-after location. For more information, contact Lextrus Real Estate today to schedule a viewing and see what makes this property a perfect fit for you.



Floor plans

1ος ΟΡΟΦΟΣ



2ος ΟΡΟΦΟΣ



Additional information

Facilities

Aircondition, Central system

Indoor pool, Communal

Storage

Elevator

Parking, Covered

Heating, Underfloor

Solar water heater

Features

24-hour security

Double glazing

Investment opportunity

Modern design

Semi-solid parquet flooring

Veranda, large

Bright

Granite countertops

Luxury specifications

Open plan

Thermal insulation

Ceramic tiles

High ceilings

Marble flooring

Pipe-in-pipe plumbing system

Veranda

Distances

Amenities

 100 m


Sea

 200 m

Contact us



Stefania Spyridou

 (+357) 99810880

 stephaniaspyridou@gmail.com

