



#10614

# Modern 3 Bedroom Detached House with Pool in Souni Limassol (10614)

📍 Souni, Limassol

€560,000 +VAT







# Overview

## Specifications

Bedrooms

 3


Bathrooms

 3

Covered

 195 m<sup>2</sup>

Type	<b>Detached House</b>
Toilets	<b>3</b>
Plot	<b>564 m<sup>2</sup></b>
Status	<b>Under construction</b>
Year of construction	<b>2026</b>

Furnished	<b>Unfurnished</b>
Structure	<b>Concrete</b>
Facade	<b>Concrete</b>
Energy efficiency rating	 <b>A</b>

## Description

Modern 3 Bedroom Detached House with Pool in Souni Limassol (10614)

House completed €560,000 + VAT | Delivery to be 12 months' time from the day of signing a contract of sale.

The house consists of 3 bedrooms and 3 bathrooms. Under Construction 10 months delivery.

Ground floor - 120m2 - Upper floor – 55 m2 | Covered veranda – 20 m2 - Total – 195 m2 | Plot - 564 m2

This is a list of what is included in the price :

Solar and electric water heating system.

Swimming pool 4m x 8m.

1m paving around the house and swimming pool.

Wooden pergola

Ceramic tiles to all ground floors and bathrooms.

Top soil garden preparation.

Air conditioning in all rooms.(split units)

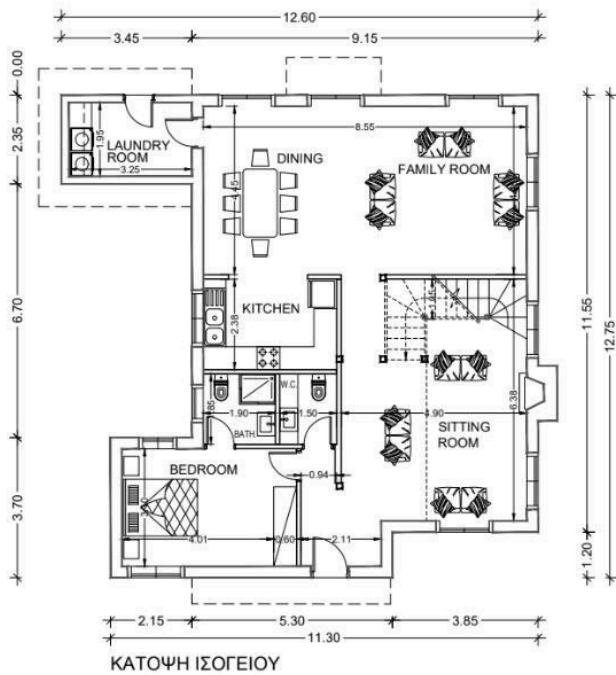
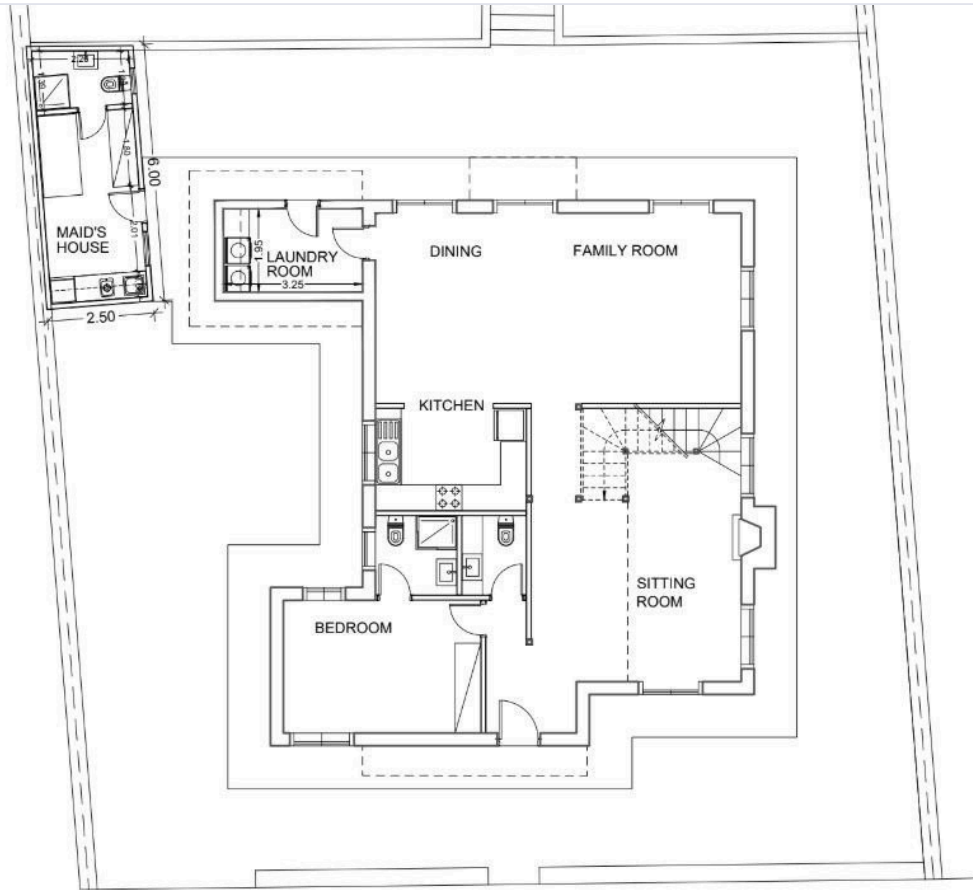
Preparation for heating system with radiators (electrical)

Provision for installation of photovoltaic panels

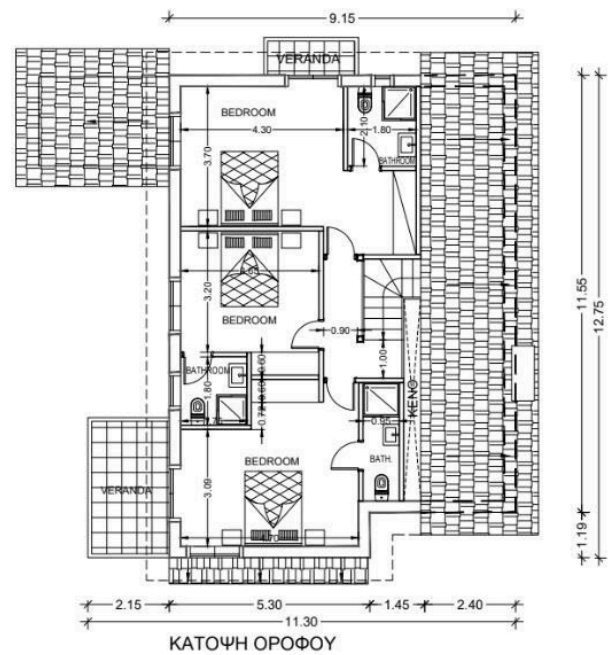
Fireplace



# Floor plans



ΟΙΚΙΑ 4



# Additional information

## Facilities

Aircondition, Provision

Landscaped garden

Pool, Private

Storage

Gated complex

Parking, Covered

Solar photovoltaic panels  
(provision)

Heating, Provision

Pergola

Solar water heater

## Features

Balcony

Combined kitchen and dining  
area

Easy access to highway

Indoor fireplace

Modern design

Pressurized water system

Veranda

Bright

Connected to electric mains

Easy access to main roads

Internal stairs

Near amenities

Quiet area

Veranda, large

Ceramic tiles

Double glazing

Granite countertops

Investment opportunity

Open plan

Thermal insulation

## Distances

Amenities



700 m

Airport




50 km

## Contact us



**Stefania Spyridou**

 (+357) 99810880

 stephaniaSpyridou@gmail.com

