

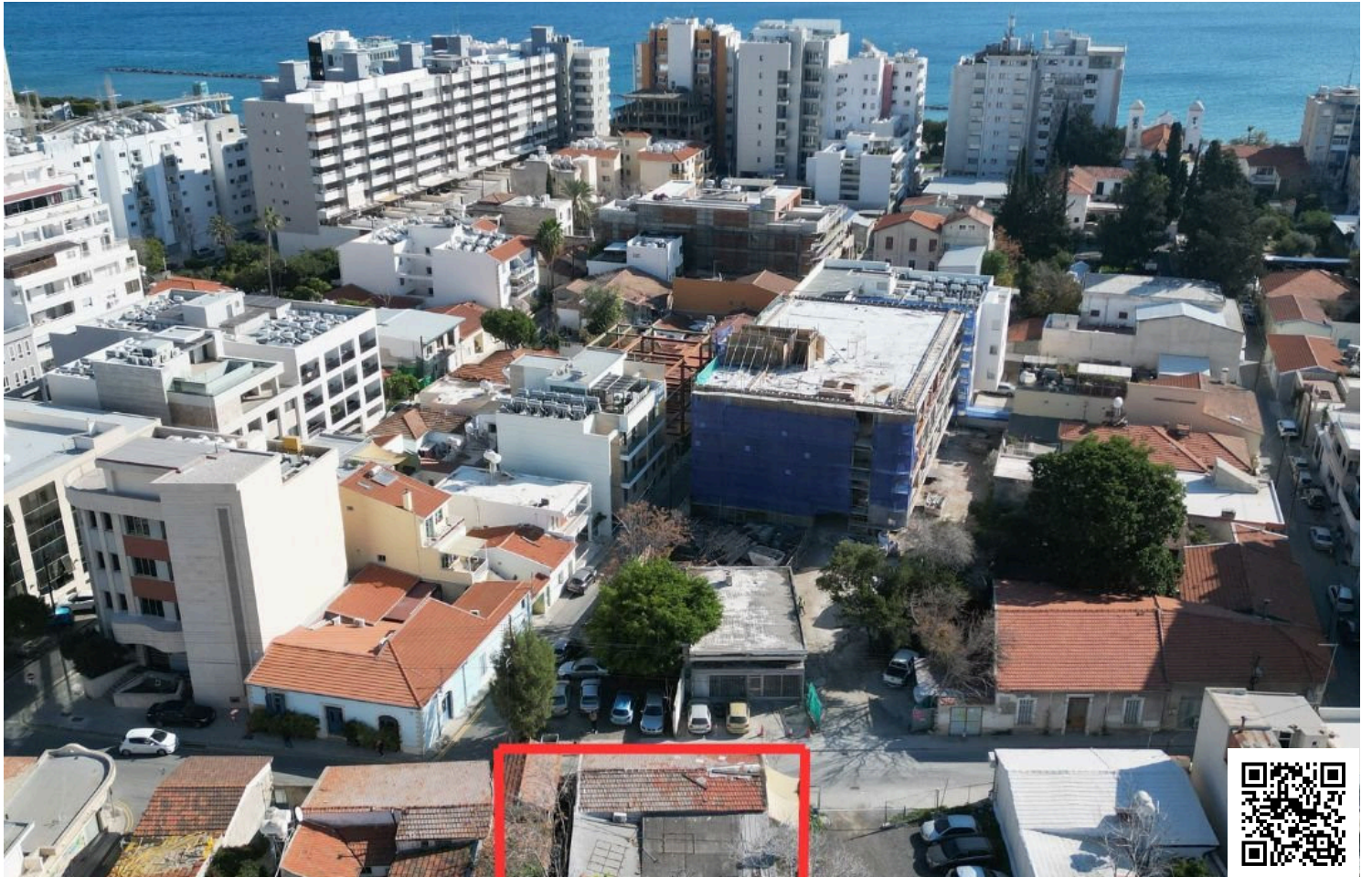


#10426

Plot for sale 200m from the sea in Limassol Historical Center (10426)

📍 Historical Center, Limassol

€980,000



Overview

Specifications

Area		380 m ²	
Type	Building Plot	Title deed	Yes

Description

Plot for sale 200m from the sea in Limassol Historical Center (10426)

The plot is located in Limassol's Historical Center, just 200m from the sea, near the Molos Promenade (200m) and Limassol Marina (2km).

It presents a strong investment opportunity, ideal for high rental yields or re-sale upon completion.

The planning application has been submitted for a development of 15 units, including 6 one-bedroom apartments and 9 studios.

As the property is held under a company, there are no VAT or transfer fees applicable.

Details:

Plot size: 380m2

Buildable area: 684m2

Building density: 180%

Units: 15

Price: €980.000



Additional information

Features

City view

Heart of city center

Prime land

Connected to electric mains

Investment opportunity

Walking distance to beach

Easy access to main roads

Municipal water/sewage

Distances

Amenities

 40 m

Airport

 55 km

Sea

 200 m

Public transport

 450 m

Schools

 90 m


Resort

 4.6 km

Contact us



Stefania Spyridou

 (+357) 99810880

 stephaniaSpyridou@gmail.com

