



#10425

Three-Level-Penthouse with 3 Bedrooms in Germasogeia, Limassol. (10425)

📍 Germasogeia Tourist Area, Limassol

€1,800,000





Overview

Specifications

Bedrooms

 **3**


Bathrooms

 **2**

Covered

 **173 m²**

Type	Duplex
Toilets	3
Covered veranda	13 m²
Uncovered veranda	21 m²
Roof garden	56 m²
Status	Resale
Year of construction	2019

Title deed	Yes
Furnished	Unfurnished
Structure	Concrete
Facade	Concrete
Communal charge frequency	Semi-annually
Energy efficiency rating	 A

Description

Three-Level-Penthouse with 3 Bedrooms in Germasogeia, Limassol. (10425)

The property is part of a unique gated complex of apartments designed in a Victorian classical style. It is highly unlikely that this style can be repeated in the foreseeable future, since urban planning authorities do not issue permits for the construction of buildings of classical architecture.

The apartment has mosaic floors, high ceilings - 3.15 m, warm full Siemens, bidets and air conditioners in the bathrooms, VRV air conditioning system from Mitsubishi, exterior door and window frames made of solid wood, Duravit plumbing, Berloni kitchen. The complex has a large swimming pool, gym, SPA, as well as a concierge and 24-hour security. Parking lot. The apartment has a title deed. The building was constructed in 2019.

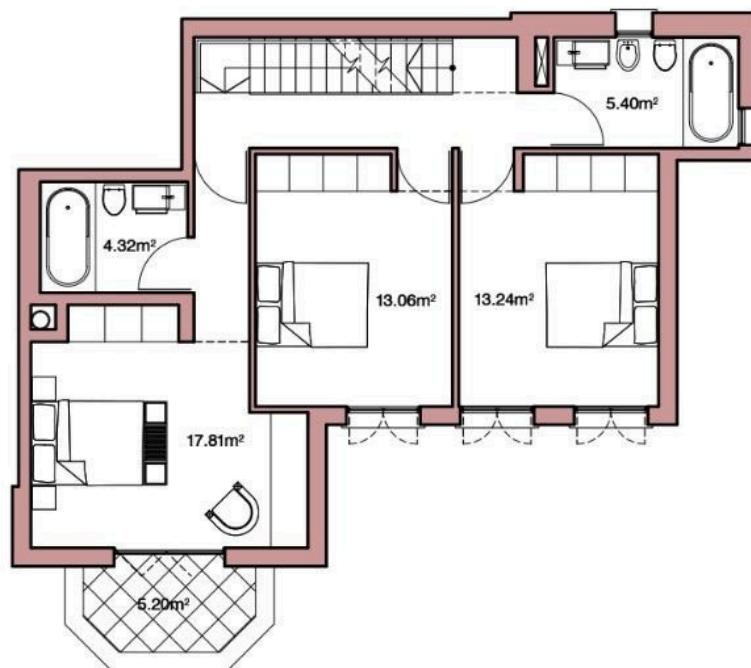
Highest quality of finishes. Floors are laid not just in marble, but with mosaics; the ceiling – 3,15 meters height; separate underfloor heating in each area controlled by Siemens-produced management system; bidet in the bathrooms; air conditioning units in the bathrooms; Mitsubishi VRV air conditioning; external door and window frames made of solid wood;

sanitary ware Duravit / Grohe; spacious swimming pool finished with mosaics; double-brick outside walls; kitchen units of Italian brand Berloni; wooden floor.

Club style project (with a concierge room, sauna, fitness center, etc.); secured fenced-in territory, 24/7 video



Floor plans



Additional information






Facilities

Elevator	Gated complex	Gym
Heating, Underfloor	Indoor pool, Communal	Landscaped garden
Parking, Underground	Pool, Private	Sauna
Solar photovoltaic panels	Solar water heater	Spa
Storage		

Features

24-hour security	Alarm system	Balcony
Balcony, front	Bath	Bright
CCTV	CCTV (provision)	Ceramic tiles
City view	Concierge	Connected to electric mains
Double glazing	Easy access to highway	Easy access to main roads
En suite bathroom	Energy efficient doors/windows	Entrance gate
Entrance gate, automated	Granite countertops	Guest WC
Investment opportunity	Jacuzzi	Luxury specifications
Marble flooring	Modern design	Mosaic tiles
Pipe-in-pipe plumbing system	Pressurized water system	Rental potential
Roof garden	Sea view	Spacious rooms
Thermal insulation	Veranda	Veranda, large
Walk-in closet		

Distances


Amenities  100 m	Airport  62 km	Sea  250 m
Public transport  250 m	Schools  900 m	



Contact us



Stavroula Michail

 (+357) 99810880

 stavroulamichail.lextrus@gmail.com

