



#10205

Stunning 3 Bedroom Villa, Kamares Village, Tala, Paphos with Panoramic View! (10205)

📍 Tala, Paphos

€550,000





Overview

Specifications

Bedrooms

 3


Bathrooms

 2

Covered

 227 m²

Type	Detached Villa
Toilets	3
Plot	800 m²
Status	Resale
Year of construction	1995

Title deed	Yes
Furnished	Unfurnished
Structure	Concrete
Facade	Concrete
Energy efficiency rating	 B

Description

Stunning 3 Bedroom Villa, Kamares Village, Tala, Paphos with Panoramic View! (10205)

The property is located in the award winning development known as Leptos Kamares Village. The project is characterized by a unique traditional architecture, offering breath-taking views of the countryside, the Paphos coastline and the Mediterranean Sea.

When you enter the villa, you step into an entrance hall which to the right, leads to the living area with the fire place, through an archway a second larger sitting area. To the left, a separate kitchen a very spacious dining area, under the staircase a guests' toilet. There is also a covered veranda at the front of the house.

A staircase lead to the upper floor where a spacious master bedroom with an en-suite bathroom, a second bedroom, a third large bedroom and a family shower room.

A second entrance at the rear offering access from the back road as the plot is attached to two roads.

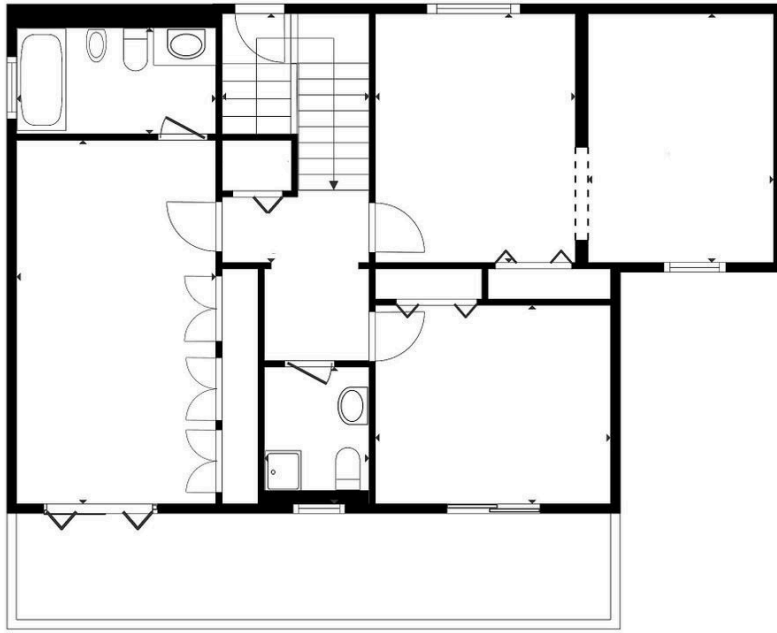
Externally there is a covered BBQ area by the kitchen side, landscaped mature gardens, paved patio areas a kidney shape Swimming Pool and a garage at the front of the plot.

The asset is located approximately 1.5km northeast from Tala community centre and about 590m northwest of Agiou Neophytou Monastery.

The property falls within Zone Kα10, with a building coefficient of 30%, coverage of 25%, and permission for 2 floors (10m) of construction.

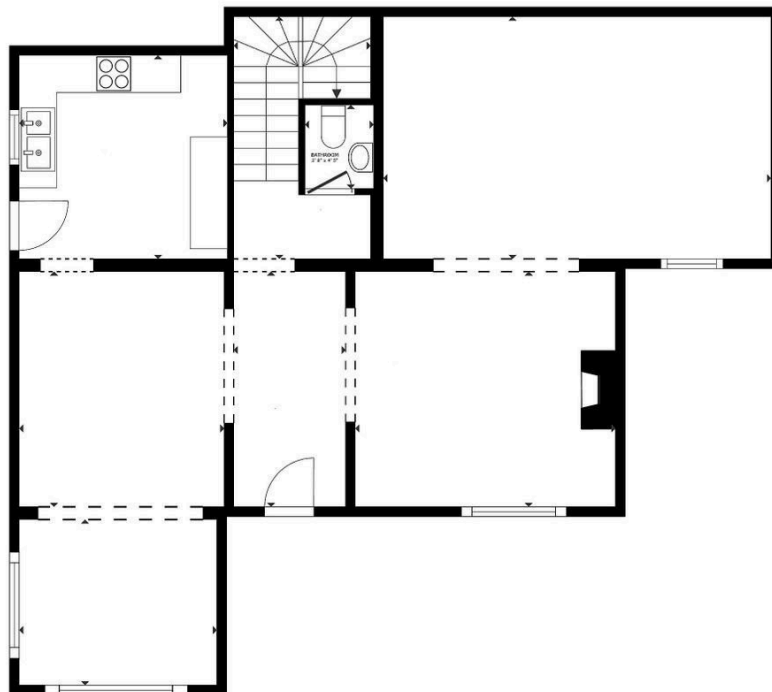


Floor plans



FLOOR 2

 Matterport



FLOOR 1

 Matterport



Additional information

Facilities

Aircondition, Split system

Pool, Private

Landscaped garden

Solar water heater

Parking, Garage

Storage

Features

Balcony

Bath

En suite bathroom

Guest WC

Near amenities

Quiet area

Veranda, large

Balcony, front

Country view

Garden

Indoor fireplace

Panoramic view

Veranda

Village view

Barbeque

Easy access to main roads

Garden, large

Internal stairs

Pool view

Veranda, front

Distances

Airport

 16 km

Sea

 7 km


Schools

 2.9 km

Contact us



Stefania Spyridou

 (+357) 99810880

 stephaniaspyridou@gmail.com

