



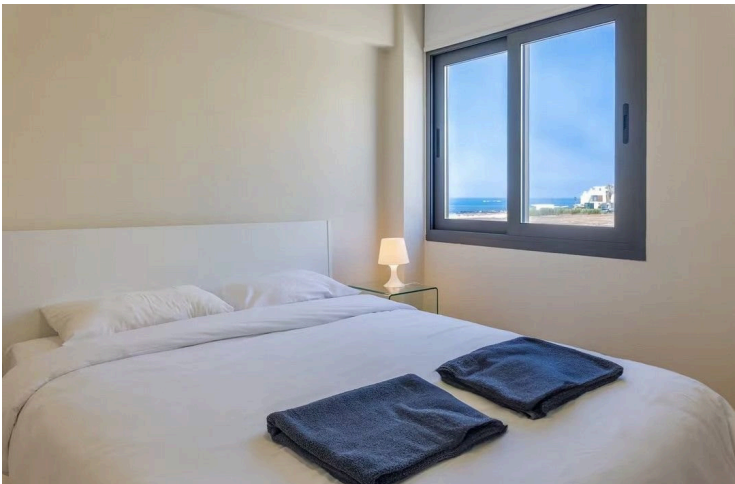
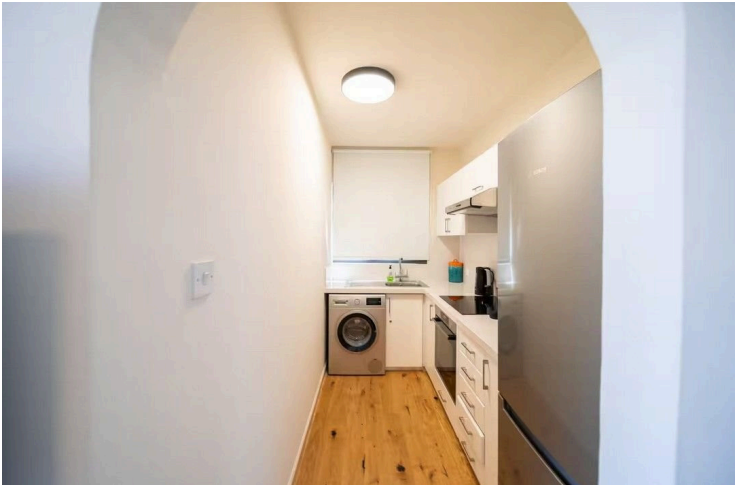
#10204

# 2 Bedroom Seaview Apartment in Kato Paphos 250M From Lighthouse Beach (10204)

📍 Kato Paphos, Paphos

€1,650 /month





# Overview

## Specifications

Bedrooms

 2


Bathrooms

 1

Covered

 70 m<sup>2</sup>

Type	<b>Apartment</b>
Toilets	<b>1</b>
Covered veranda	<b>12 m<sup>2</sup></b>
Status	<b>Used</b>
Furnished	<b>Fully furnished</b>

Structure	<b>Concrete</b>
Facade	<b>Concrete</b>
Communal charge frequency	<b>Monthly</b>
Energy efficiency rating	 <b>A</b>

## Description

2 Bedroom Seaview Apartment in Kato Paphos 250M From Lighthouse Beach (10204)

PRICE : EUR 1.650 | Min 1 year contract , 1 deposit needed | Utility Bills Are Transferable

Amazing Location - renovated in March 2024 - this impressive apartment offers captivating views of the Mediterranean Sea and is ideally located in the central coastal region of Paphos right on Faros Areaa. It is located in the most breath-taking sea cost of the island with amazing beach bars. Located in the desirable Lighthouse Area, the apartment also includes a sofa bed to accommodate two extra guests. This area is considered the most sought-after in both Paphos and Cyprus.

### The space

All rooms are double sided with a living room that has a lovely balcony overlooking the Mediterranean. All rooms including the living room are sea view. The apartment has everything you need for your summer holidays.

### Guest access

The apartment is situated on the first floor of a two story building. There are stairs to the apartment.

### Other things to note

The apartment is located in the most prominent location of Paphos. It is walking distance to the beach making it an

# Additional information

## Facilities

Aircondition, Split system

Heating, Split system

Parking, Covered

Solar water heater

Storage

## Features

Bright

Ceramic tiles

Double glazing

Easy access to main roads

Fire detector

Granite countertops

Internet

Kitchen appliances

Modern design

Near amenities

Open plan

Parquet flooring

Sea view

Thermal insulation

Veranda

Walking distance to beach

## Distances

Amenities



700 m

Airport



14.7 km

Sea



250 m

Public transport



300 m

Schools




900 m

## Contact us



**Stavroula Michail**

 (+357) 99810880

 stavroulamichail.lextrus@gmail.com