



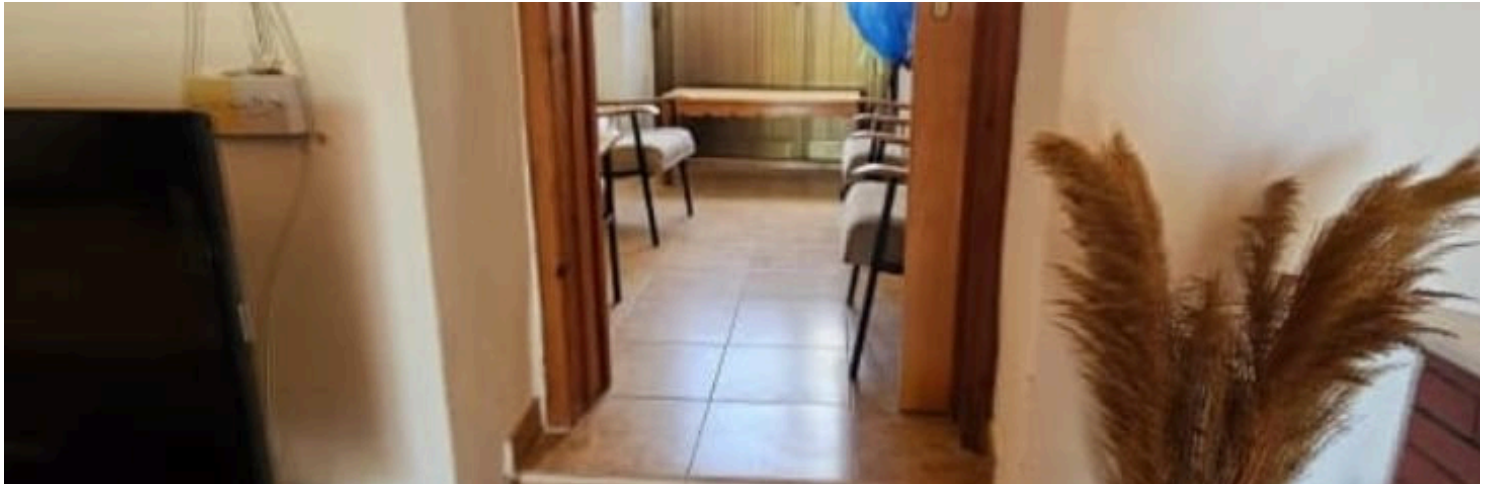
#10076

2-Bedroom Detached House in Letymbou, Paphos – Stunning Mountain and Country Views (10076)

📍 Letymvou, Paphos




€130,000





Overview

Specifications

| | | | | | |
|---|--------------------|---|--|--|---------------------|
| Bedrooms | | Bathrooms | | Covered | |
|  2 | |  1 | |  200 m ² | |
| | | | | | |
| Type | Detached House | | | Year of construction | 1980 |
| Showers | 1 | | | Title deed | Yes |
| Toilets | 2 | | | Furnished | Partially furnished |
| Plot | 335 m ² | | | Structure | Concrete |
| Status | Resale | | | Facade | Concrete |

Description

2-Bedroom Detached House in Letymbou, Paphos – Stunning Mountain and Country Views (10076)

Priced at just €130,000

This is an excellent opportunity to own a cozy 2-bedroom detached house located in the peaceful village of Letymbou, Paphos. Nestled in a serene country setting, this property boasts stunning mountain views, offering tranquility and natural beauty.

- Plot area: Approximately 335 sqm
- House area: 200 sqm
- Bedrooms: 2
- Bathrooms: 2
- Furnishing: Semi-furnished
- Parking: Covered
- Condition: Resale

The property also features a lovely garden, perfect for enjoying the countryside ambiance. It's ideal for those looking for a permanent residence, a holiday home, or even an investment opportunity.



Additional information

Facilities

Aircondition, Split system

Parking, Uncovered

Storage

Features

Country view

Garden

Guest WC

Quiet area

Distances

Amenities



1 km

Airport



16 km

Sea



16 km

Public transport



4 km

Schools



10 km

Resort



3 km

Contact us



Giorgos Tsiampas

☎ (+357) 99982112

✉ infolextrusrealestate@gmail.com

