



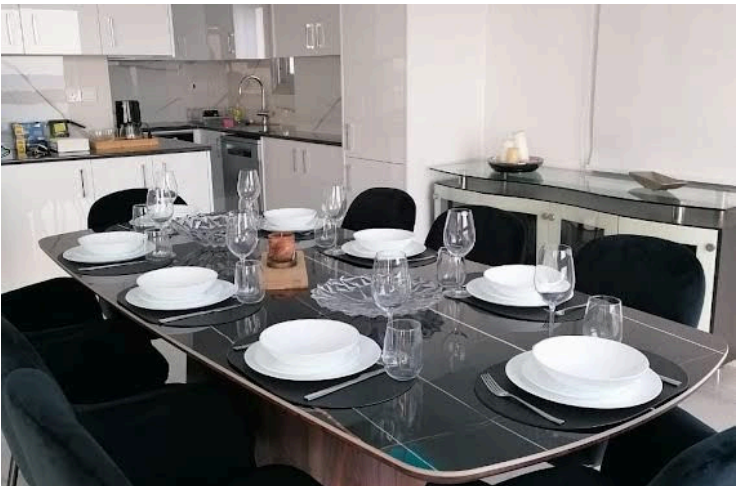
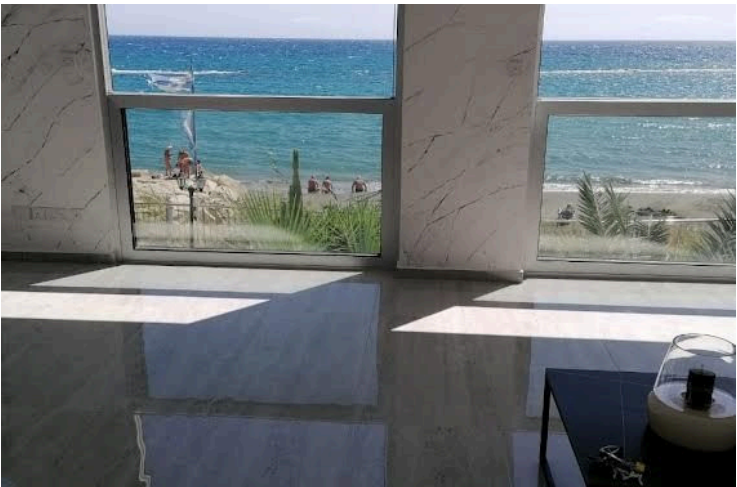
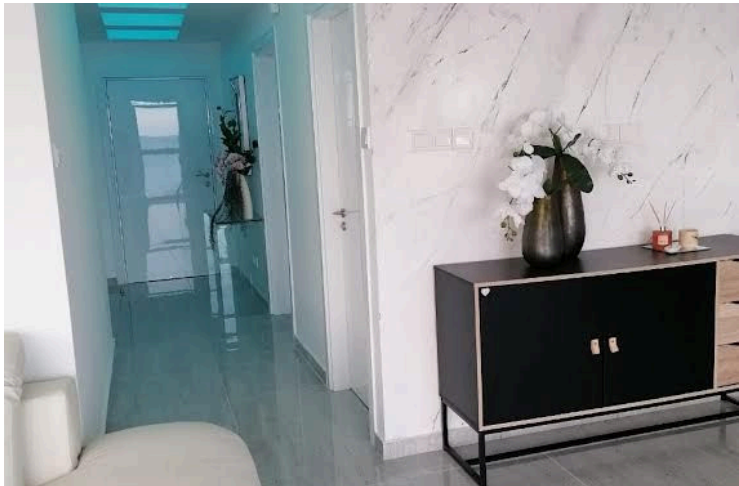
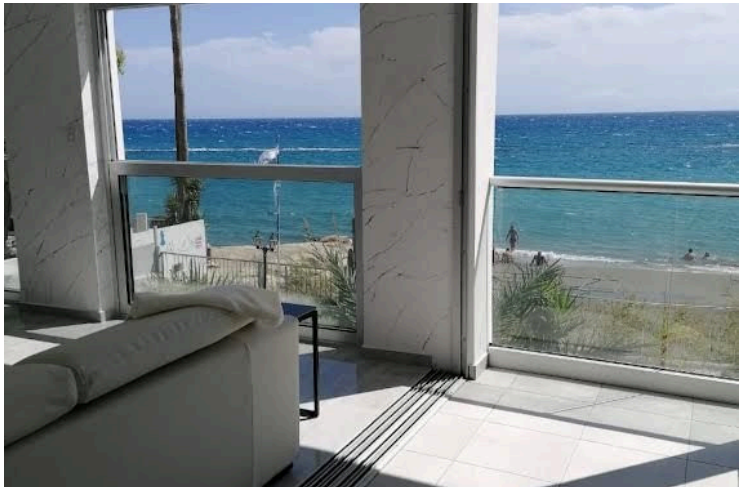
#10022

3 Bedroom Sea View Apartment in Germasogeia Limassol (10022)

📍 Germasogeia, Limassol





€4,500 /month





Overview

Specifications

Bedrooms		Bathrooms		Covered	
 3		 2		 110 m ²	
Type		Apartment			
Toilets		2			
Covered veranda		20 m ²			
Status		Used			
Year of construction		1979			
Furnished		Fully furnished			
Structure		Concrete			
Facade		Concrete			
Energy efficiency rating		 C			

Description

3 Bedroom Sea View Apartment in Germasogeia Limassol (10022)

Welcome to this charming 3-bedroom apartment in the heart of Germasogeia. With an internal space of 110 m2, this fully furnished residence offers comfort and convenience in a vibrant neighborhood. Located on the first floor of a five-story building with an elevator, this home provides easy access and stunning sea views that make every day feel like a vacation.

Germasogeia is a sought-after area known for its lively atmosphere and beautiful surroundings. You will find an array of amenities nearby, including shops, restaurants, and local markets, catering to all your daily needs. The scenic coastline is just a short stroll away, offering beaches and waterfront activities for those who appreciate the outdoor lifestyle.

Built in 1979, this apartment showcases a timeless design while providing modern living comforts. With two bathrooms, there is ample space for family and guests alike. Don't miss the chance to make this lovely apartment your new home.



Additional information

Facilities

Aircondition, Split system

Elevator

Parking, Covered

Solar water heater

Storage

Features

Bright

Ceramic tiles

Double glazing

Easy access to main roads

Energy efficient doors/windows

Fitted wardrobes

Granite countertops

Investment opportunity

Near amenities

Near bus route

Open plan

Pressurized water system

Sea view

Veranda

Walking distance to beach

Distances

Amenities



100 m

Airport



60.5 km

Sea



10 m

Public transport



150 m

Schools



500 m

Resort




450 m

Contact us



Stavroula Michail

 (+357) 99810880

 stavroulamichail.lextrus@gmail.com

